

SITE PLAN

FACILITIES AT 1ST STOREY:

- a

Grand clubhouse, consisting of:

· Arrival dropoff

· Welcome lobby

· Waterfall

· Multi-purpose rooms with toilet (2 nos)

· Library

· Star gazing lawn

· Games room

· Music room

· Multi media room

· Male & female toilets

· Accessible toilets (2 nos)
- b

Treehouse pavilion with water terrace
- c

The lawn
- d

50m swimming pool
(surfacing area approx. 510m²)
with pool decks
- e

Stream pool, consisting of:

· Lagoon pool (surfacing area approx. 110m²)

· Forest pods (3 nos)
- f

Active clubhouse, consisting of:

· Gym (upper storey)

· Yoga deck (upper storey)

· Pool deck

· Changing rooms
(male and female changing room,
each with steam room)

· Accessible toilet
- g

Picnic lawn
- h

Fitness lawn
- i

Leisure lawn
- j

Taichi lawn
- k

Yoga lawn
- l

Wellness garden, consisting of:

· Mist trail

· Spa pavilions (2 nos)

· Boardwalk
- m

Kid's adventure park, consisting of:

· Kid's aqua play (surfacing area approx. 60m²)

· Kid's jumping water jet

· Zipline

· Adventure playground

LEGEND

- 1-BEDROOM
- 1-BEDROOM (with Study)
- 2-BEDROOM
- 2-BEDROOM PREMIUM
- 2-BEDROOM (with Study)
- 3-BEDROOM
- 3-BEDROOM PREMIUM
- 3-BEDROOM (with Study)
- 4-BEDROOM

- n

Tennis court (1 no, hard court)
- o

Fern court
- p

Bamboo court
- q

Haleconia court
- r

Cascading garden walk
- s

Adult fitness station
- t

Pedestrian side gate
- u

Bicycle parks (2 nos)
- v

Guard house
- w

Generator
- x

Bin centre (basement)
- y

Substation (basement)
- z

Child care centre (1st storey & basement)
- aa

Child care centre's dropoff
- bb

Child care centre's parking
- cc

Entry & exit to carpark (basement & MSCP)
- dd

Entry & exit to substation and bin centre
(basement)

FACILITIES AT ROOF OF MSCP:

- ee

Leisure deck, consisting of:

· Lap pool (surfacing area approx. 140m²)

· Aqua bubbling decks (3 nos)

· Water decks (2 nos)

· Pool lounges (2 nos)
- ff

Gourmet pavilion (with bbq pit)
- gg

Dining pavilion (with bbq pit)
- hh

Wine & chill pavilion
- ii

Sky marsh land, consisting of:

· Boardwalk

· Bioswale

· Equisetum pond
- jj

Look out point
- kk

Toilets with shower (2 nos)
- ll

Accessible toilet

FACILITIES AT
18TH STOREY OF BLOCK 30:

- mm

Sky dining pavilion, consisting of:

· Cooking counter (with bbq pit)

· Alfresco dining
- nn

Starlight lounge
- oo

City view lounge
- pp

Accessible toilet

Water Tank Position (Roof Level)



- 1-BEDROOM
- 1-BEDROOM (with Study)
- 2-BEDROOM
- 2-BEDROOM PREMIUM
- 2-BEDROOM (with Study)
- 3-BEDROOM
- 3-BEDROOM PREMIUM
- 3-BEDROOM (with Study)
- 4-BEDROOM

22 SIMS DRIVE (S)387396

FLOOR	UNIT	10	11	12	13	14	15	16	17	18
18		#18-10 (2)a	#18-11 (3)b	#18-12 (4)a	#18-13 (1)b	#18-14 (2+1)b	#18-15 (2P)a	#18-16 (3Y)a	#18-17 (3)a	#18-18 (2)a
17		#17-10 (2)a	#17-11 (3)b	#17-12 (4)a	#17-13 (1)b	#17-14 (2+1)b	#17-15 (2P)a	#17-16 (3Y)a	#17-17 (3)a	#17-18 (2)a
16		#16-10 (2)a	#16-11 (3)b	#16-12 (4)a	#16-13 (1)b	#16-14 (2+1)b	#16-15 (2P)a	#16-16 (3Y)a	#16-17 (3)a	#16-18 (2)a
15		#15-10 (2)a	#15-11 (3)b	#15-12 (4)a	#15-13 (1)b	#15-14 (2+1)b	#15-15 (2P)a	#15-16 (3Y)a	#15-17 (3)a	#15-18 (2)a
14		#14-10 (2)a	#14-11 (3)b	#14-12 (4)a	#14-13 (1)b	#14-14 (2+1)b	#14-15 (2P)a	#14-16 (3Y)a	#14-17 (3)a	#14-18 (2)a
13		#13-10 (2)a	#13-11 (3)b	#13-12 (4)a	#13-13 (1)b	#13-14 (2+1)b	#13-15 (2P)a	#13-16 (3Y)a	#13-17 (3)a	#13-18 (2)a
12		#12-10 (2)a	#12-11 (3)b	#12-12 (4)a	#12-13 (1)b	#12-14 (2+1)b	#12-15 (2P)a	#12-16 (3Y)a	#12-17 (3)a	#12-18 (2)a
11		#11-10 (2)a	#11-11 (3)b	#11-12 (4)a	#11-13 (1)b	#11-14 (2+1)b	#11-15 (2P)a	#11-16 (3Y)a	#11-17 (3)a	#11-18 (2)a
10		#10-10 (2)a	#10-11 (3)b	#10-12 (4)a	#10-13 (1)b	#10-14 (2+1)b	#10-15 (2P)a	#10-16 (3Y)a	#10-17 (3)a	#10-18 (2)a
9		#09-10 (2)a	#09-11 (3)b	#09-12 (4)a	#09-13 (1)b	#09-14 (2+1)b	#09-15 (2P)a	#09-16 (3Y)a	#09-17 (3)a	#09-18 (2)a
8		#08-10 (2)a	#08-11 (3)b	#08-12 (4)a	#08-13 (1)b	#08-14 (2+1)b	#08-15 (2P)a	#08-16 (3Y)a	#08-17 (3)a	#08-18 (2)a
7		#07-10 (2)a	#07-11 (3)b	#07-12 (4)a	#07-13 (1)b	#07-14 (2+1)b	#07-15 (2P)a	#07-16 (3Y)a	#07-17 (3)a	#07-18 (2)a
6		#06-10 (2)a	#06-11 (3)b	#06-12 (4)a	#06-13 (1)b	#06-14 (2+1)b	#06-15 (2P)a	#06-16 (3Y)a	#06-17 (3)a	#06-18 (2)a
5		#05-10 (2)a1	#05-11 (3)b1	#05-12 (4)a	#05-13 (1)b	#05-14 (2+1)b	#05-15 (2P)a	#05-16 (3Y)a	#05-17 (3)a1	#05-18 (1)d1)
4	Carpark			#04-12 (4)a	#04-13 (1)b	#04-14 (2+1)b	#04-15 (2P)a	#04-16 (3Y)a		Carpark
3	Carpark			#03-12 (4)a	#03-13 (1)b	#03-14 (2+1)b	#03-15 (2P)a	#03-16 (3Y)a		Carpark
2				#02-12 (4)a	#02-13 (1)b	#02-14 (2+1)b	#02-15 (2P)a	#02-16 (3Y)a		Carpark
1	Carpark			#01-12 (4)a1	#01-13 (1)b1	#01-14 (1+1)b1	#01-15 (2P)a1	#01-16 (3Y)a1		Carpark
B1						Lobby Carpark				

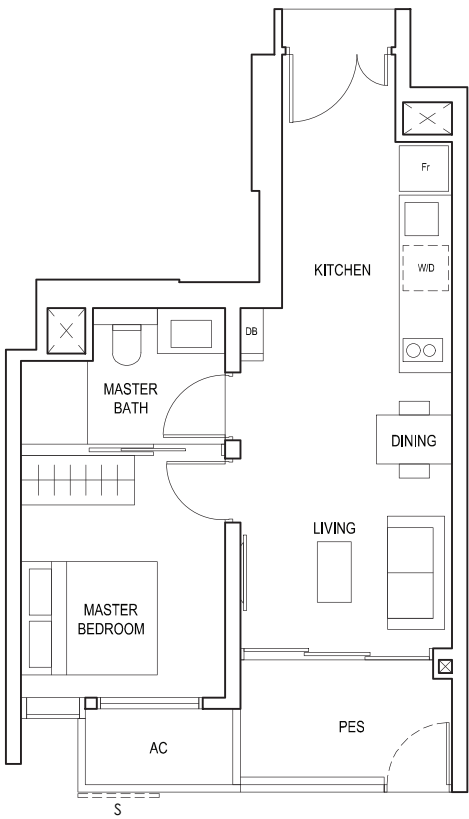
30 SIMS DRIVE (S)387400

FLOOR	UNIT	28	29	30	31	32	33	34	35
18		Sky Garden		#18-30 (3)c	#18-31 (2P)b	#18-32 (2P)b	#18-33 (3)d	Sky Garden	
17		#17-28 (2)b	#17-29 (3)e	#17-30 (3)c	#17-31 (2P)b	#17-32 (2P)b	#17-33 (3)d	#17-34 (3Y)d	#17-35 (2P)c
16		#16-28 (2)b	#16-29 (3)e	#16-30 (3)c	#16-31 (2P)b	#16-32 (2P)b	#16-33 (3)d	#16-34 (3Y)d	#16-35 (2P)c
15		#15-28 (2)b	#15-29 (3)e	#15-30 (3)c	#15-31 (2P)b	#15-32 (2P)b	#15-33 (3)d	#15-34 (3Y)d	#15-35 (2P)c
14		#14-28 (2)b	#14-29 (3)e	#14-30 (3)c	#14-31 (2P)b	#14-32 (2P)b	#14-33 (3)d	#14-34 (3Y)d	#14-35 (2P)c
13		#13-28 (2)b	#13-29 (3)e	#13-30 (3)c	#13-31 (2P)b	#13-32 (2P)b	#13-33 (3)d	#13-34 (3Y)d	#13-35 (2P)c
12		#12-28 (2)b	#12-29 (3)e	#12-30 (3)c	#12-31 (2P)b	#12-32 (2P)b	#12-33 (3)d	#12-34 (3Y)d	#12-35 (2P)c
11		#11-28 (2)b	#11-29 (3)e	#11-30 (3)c	#11-31 (2P)b	#11-32 (2P)b	#11-33 (3)d	#11-34 (3Y)d	#11-35 (2P)c
10		#10-28 (2)b	#10-29 (3)e	#10-30 (3)c	#10-31 (2P)b	#10-32 (2P)b	#10-33 (3)d	#10-34 (3Y)d	#10-35 (2P)c
9		#09-28 (2)b	#09-29 (3)e	#09-30 (3)c	#09-31 (2P)b	#09-32 (2P)b	#09-33 (3)d	#09-34 (3Y)d	#09-35 (2P)c
8		#08-28 (2)b	#08-29 (3)e	#08-30 (3)c	#08-31 (2P)b	#08-32 (2P)b	#08-33 (3)d	#08-34 (3Y)d	#08-35 (2P)c
7		#07-28 (2)b	#07-29 (3)e	#07-30 (3)c	#07-31 (2P)b	#07-32 (2P)b	#07-33 (3)d	#07-34 (3Y)d	#07-35 (2P)c
6		#06-28 (2)b	#06-29 (3)e	#06-30 (3)c	#06-31 (2P)b	#06-32 (2P)b	#06-33 (3)d	#06-34 (3Y)d	#06-35 (2P)c
5		#05-28 (2)b	#05-29 (3)e	#05-30 (3)c	#05-31 (2P)b	#05-32 (2P)b	#05-33 (3)d	#05-34 (3Y)d	#05-35 (2P)c
4		#04-28 (2)b	#04-29 (3)e	#04-30 (3)c	#04-31 (2P)b	#04-32 (2P)b	#04-33 (3)d	#04-34 (3Y)d	#04-35 (2P)c
3		#03-28 (2)b	#03-29 (3)e	#03-30 (3)c	#03-31 (2P)b	#03-32 (2P)b	#03-33 (3)d	#03-34 (3Y)d	#03-35 (2P)c
2					#02-31 (2P)b	#02-32 (2P)b	#02-33 (3)d	Child Care Centre	
1					#01-31 (2P)b1	#01-32 (1)c1	#01-33 (3)d1		
B1		Lobby Carpark						Child Care Centre	

1-BEDROOM

TYPE (1)a1

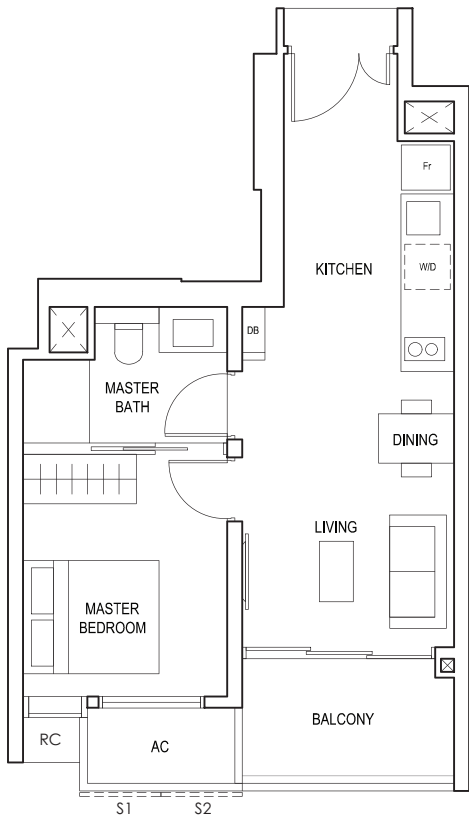
#01-05
45 sq m
484sqft



S - FULL HEIGHT ALUMINIUM PERFORATED SCREEN

TYPE (1)a

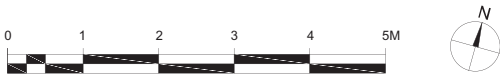
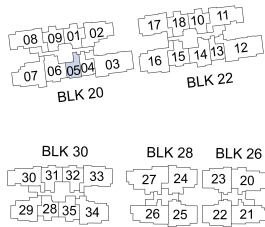
#02-05 to #18-05
45 sq m
484sqft



FULL HEIGHT ALUMINIUM PERFORATED SCREEN LOCATED AT LEVELS:
S1 - #03, #05, #07, #09, #11, #13, #15 & #17
S2 - #02, #04, #06, #08, #10, #12, #14, #16 & #18

LEGEND:
Fr - FRIDGE DB - DISTRIBUTION BOARD W/D - WASHER CUM DRYER
AC - AIRCON LEDGE PES - PRIVATE ENCLOSED SPACE RC - REINFORCED CONCRETE LEDGE

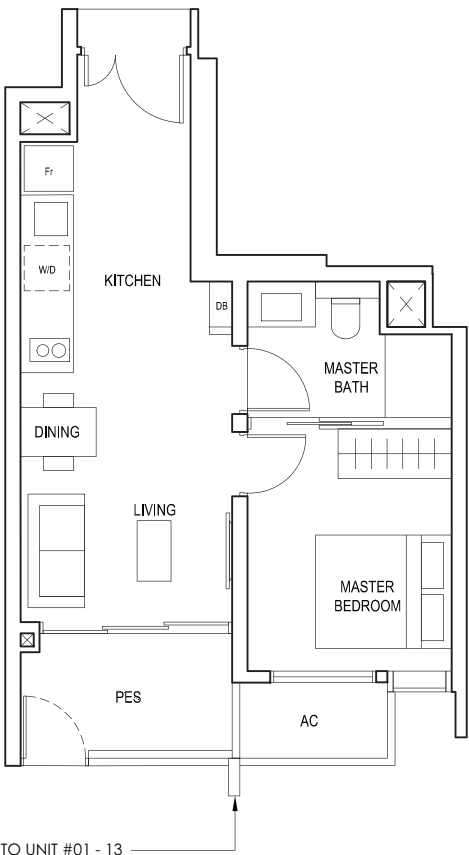
* AREA INCLUDES AIRCON (AC) LEDGE, BALCONY AND PRIVATE ENCLOSED SPACE (PES).
* THE BALCONY/PRIVATE ENCLOSED SPACE (PES) SHALL NOT BE ENCLOSED UNLESS WITH THE APPROVED BALCONY/PES SCREEN. FOR AN ILLUSTRATION OF THE APPROVED BALCONY/PES SCREEN, PLEASE REFER TO THE DIAGRAM ANNEXED HERETO AS "ANNEXURE 1".



1-BEDROOM

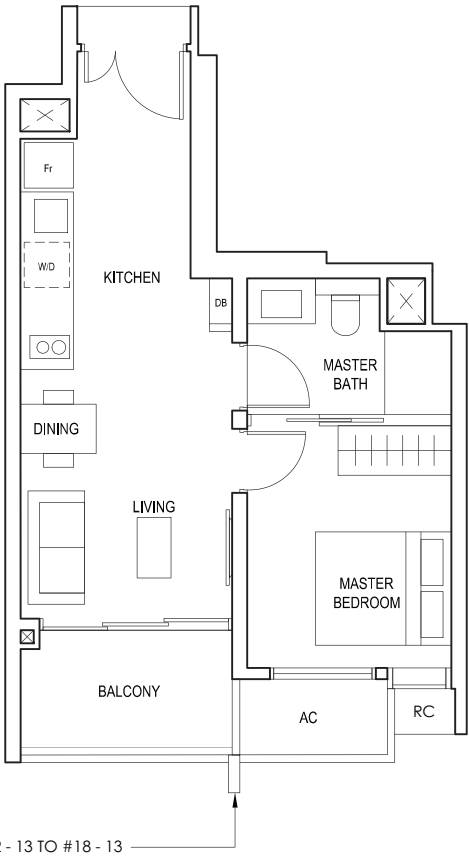
TYPE (1)b1

#01-04
#01-13
44 sq m
474sqft



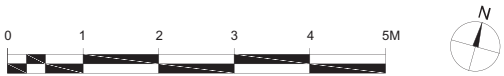
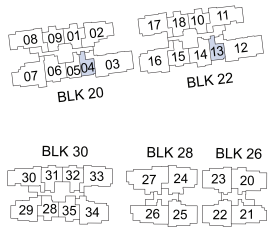
TYPE (1)b

#02-04 to #18-04
#02-13 to #18-13
44 sq m
474sqft



LEGEND:
Fr - FRIDGE DB - DISTRIBUTION BOARD W/D - WASHER CUM DRYER
AC - AIRCON LEDGE PES - PRIVATE ENCLOSED SPACE RC - REINFORCED CONCRETE LEDGE

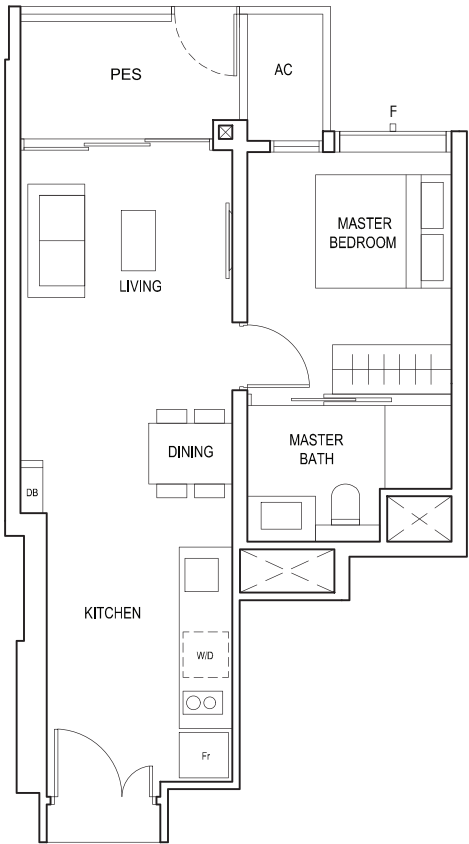
* AREA INCLUDES AIRCON (AC) LEDGE, BALCONY AND PRIVATE ENCLOSED SPACE (PES).
* THE BALCONY/PRIVATE ENCLOSED SPACE (PES) SHALL NOT BE ENCLOSED UNLESS WITH THE APPROVED BALCONY/PES SCREEN. FOR AN ILLUSTRATION OF THE APPROVED BALCONY/PES SCREEN, PLEASE REFER TO THE DIAGRAM ANNEXED HERETO AS "ANNEXURE 1".



1-BEDROOM

TYPE (1)c1

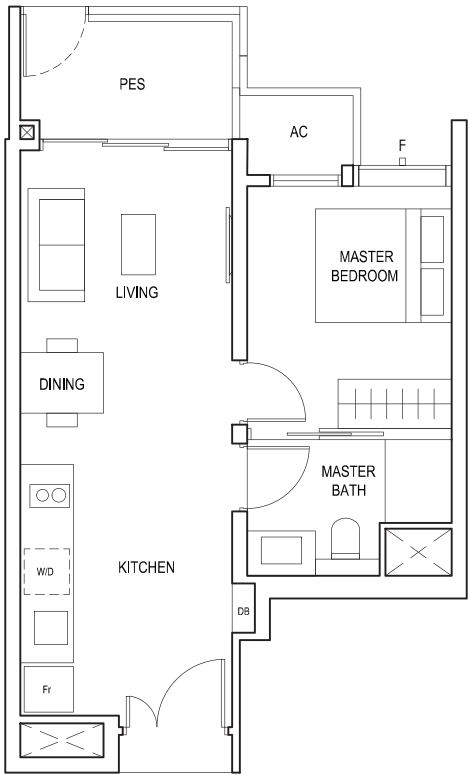
#01-32
48 sq m
517sqft



F - FULL HEIGHT ALUMINIUM FIN

TYPE (1)d1

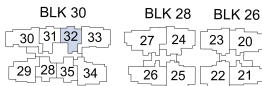
#05-09
#05-18
46 sq m
495sqft



F - FULL HEIGHT ALUMINIUM FIN

LEGEND:
Fr - FRIDGE DB - DISTRIBUTION BOARD W/D - WASHER CUM DRYER
AC - AIRCON LEDGE PES - PRIVATE ENCLOSED SPACE

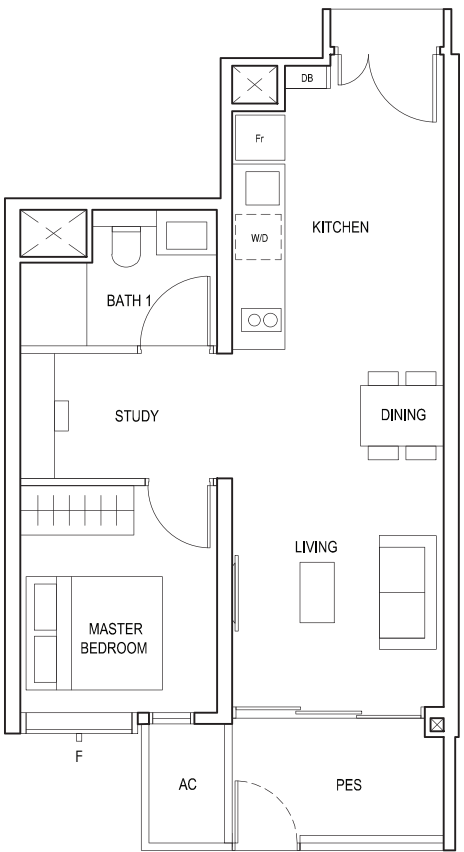
* AREA INCLUDES AIRCON (AC) LEDGE, BALCONY AND PRIVATE ENCLOSED SPACE (PES).
* THE BALCONY/PRIVATE ENCLOSED SPACE (PES) SHALL NOT BE ENCLOSED UNLESS WITH THE APPROVED BALCONY/PES SCREEN. FOR AN ILLUSTRATION OF THE APPROVED BALCONY/PES SCREEN, PLEASE REFER TO THE DIAGRAM ANNEXED HERETO AS "ANNEXURE 1".



1-BEDROOM
(with Study)

TYPE (1+1)a1

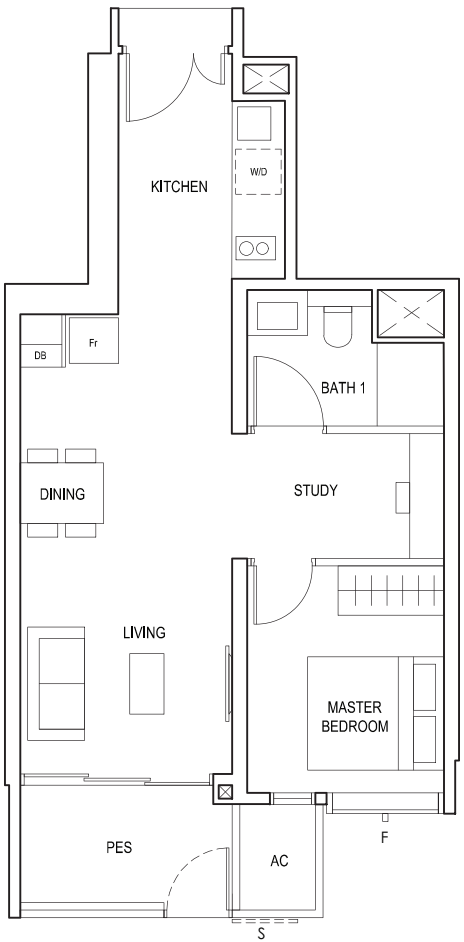
#01-06
52 sq m
560sqft



F - FULL HEIGHT ALUMINIUM FIN

TYPE (1+1)b1

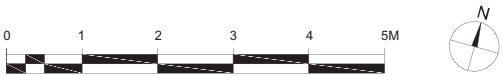
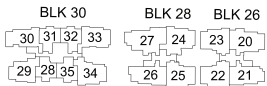
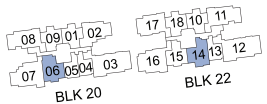
#01-14
53 sq m
570sqft



S - FULL HEIGHT ALUMINIUM PERFORATED SCREEN
F - FULL HEIGHT ALUMINIUM FIN

LEGEND:
Fr - FRIDGE DB - DISTRIBUTION BOARD W/D - WASHER CUM DRYER
AC - AIRCON LEDGE PES - PRIVATE ENCLOSED SPACE

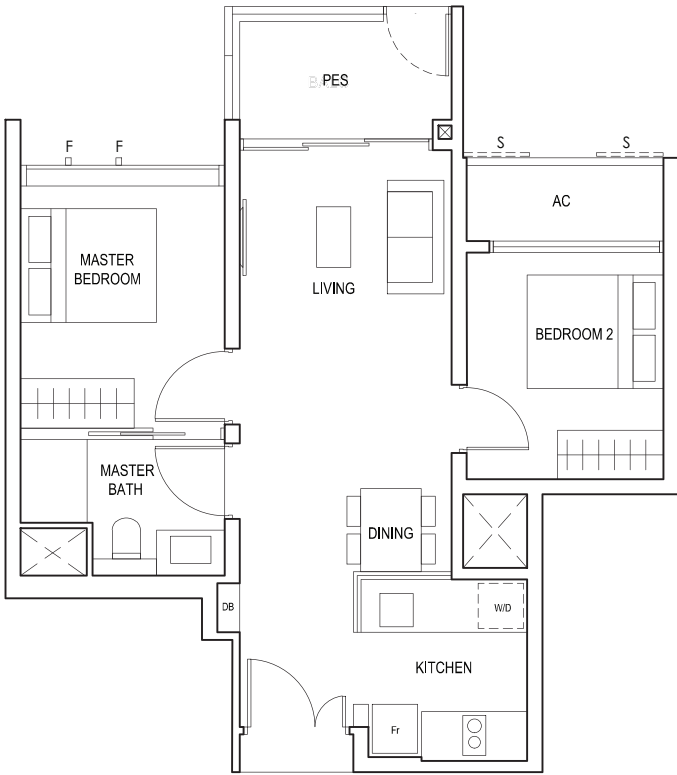
* AREA INCLUDES AIRCON (AC) LEDGE, BALCONY AND PRIVATE ENCLOSED SPACE (PES).
* THE BALCONY/PRIVATE ENCLOSED SPACE (PES) SHALL NOT BE ENCLOSED UNLESS WITH THE APPROVED BALCONY/PES SCREEN. FOR AN ILLUSTRATION OF THE APPROVED BALCONY/PES SCREEN, PLEASE REFER TO THE DIAGRAM ANNEXED HERETO AS "ANNEXURE 1".



2-BEDROOM

TYPE (2)a1

#05-01
#05-10
60 sq m
646sqft



S - FULL HEIGHT ALUMINIUM PERFORATED SCREEN
F - FULL HEIGHT ALUMINIUM FIN

TYPE (2)a

#06-01 to #18-01
#06-10 to #18-10
60 sq m
646sqft

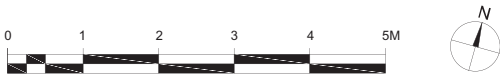
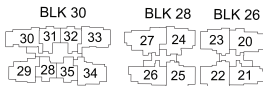
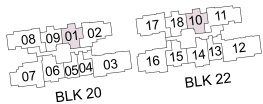


FULL HEIGHT ALUMINIUM PERFORATED SCREEN LOCATED AT LEVELS:
S1 - #06, #07, #09, #10, #11, #13, #14, #15, #17 & #18
S2 - #06, #08, #10, #12, #14, #16 & #18
S3 - #07, #08, #09, #11, #12, #13, #15, #16 & #17

F - FULL HEIGHT ALUMINIUM FIN

LEGEND:
Fr - FRIDGE DB - DISTRIBUTION BOARD W/D - WASHER CUM DRYER
AC - AIRCON LEDGE PES - PRIVATE ENCLOSED SPACE RC - REINFORCED CONCRETE LEDGE

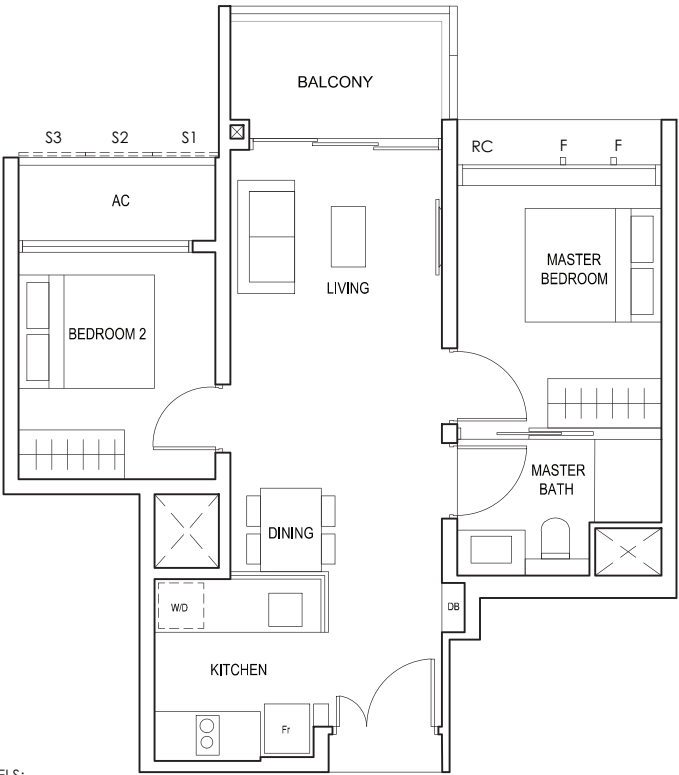
* AREA INCLUDES AIRCON (AC) LEDGE, BALCONY AND PRIVATE ENCLOSED SPACE (PES).
* THE BALCONY/PRIVATE ENCLOSED SPACE (PES) SHALL NOT BE ENCLOSED UNLESS WITH THE APPROVED BALCONY/PES SCREEN. FOR AN ILLUSTRATION OF THE APPROVED BALCONY/PES SCREEN, PLEASE REFER TO THE DIAGRAM ANNEXED HERETO AS "ANNEXURE 1".



2-BEDROOM

TYPE (2)a

#06-09 to #18-09
#06-18 to #18-18
60 sq m
646sqft

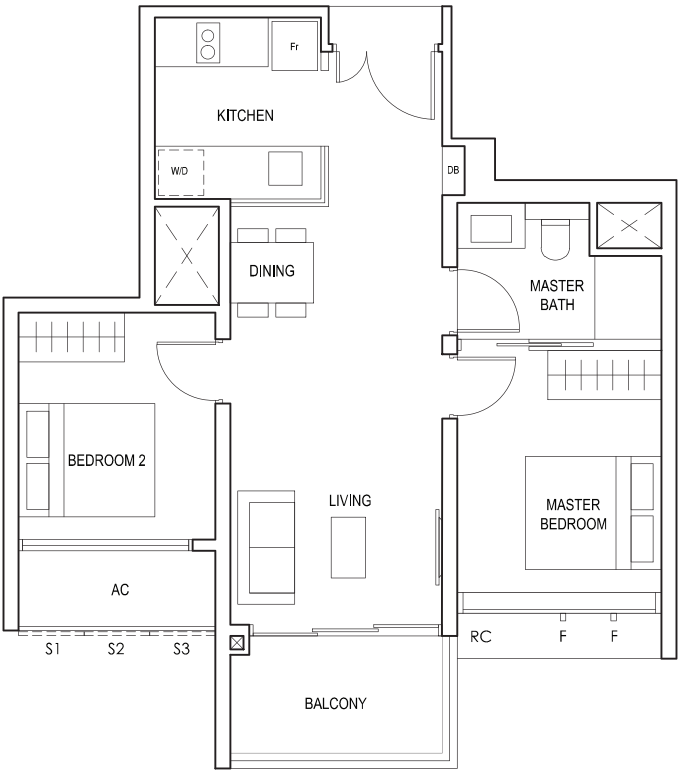


FULL HEIGHT ALUMINIUM PERFORATED SCREEN LOCATED AT LEVELS:
S1 - #06, #07, #09, #10, #11, #13, #14, #15, #17 & #18
S2 - #06, #08, #10, #12, #14, #16 & #18
S3 - #07, #08, #09, #11, #12, #13, #15, #16 & #17

F - FULL HEIGHT ALUMINIUM FIN

TYPE (2)b

#03-28 to #17-28
60 sq m
646sqft

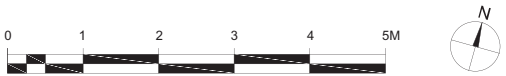
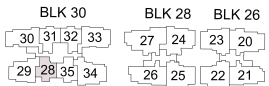


FULL HEIGHT ALUMINIUM PERFORATED SCREEN LOCATED AT LEVELS:
S1 - #03, #05, #06, #07, #09, #10, #11, #13, #14, #15 & #17
S2 - #04, #06, #08, #10, #12, #14 & #16
S3 - #03, #04, #05, #07, #08, #09, #11, #12, #13, #15, #16 & #17

F - FULL HEIGHT ALUMINIUM FIN

LEGEND:
Fr - FRIDGE DB - DISTRIBUTION BOARD W/D - WASHER CUM DRYER
AC - AIRCON LEDGE RC - REINFORCED CONCRETE LEDGE

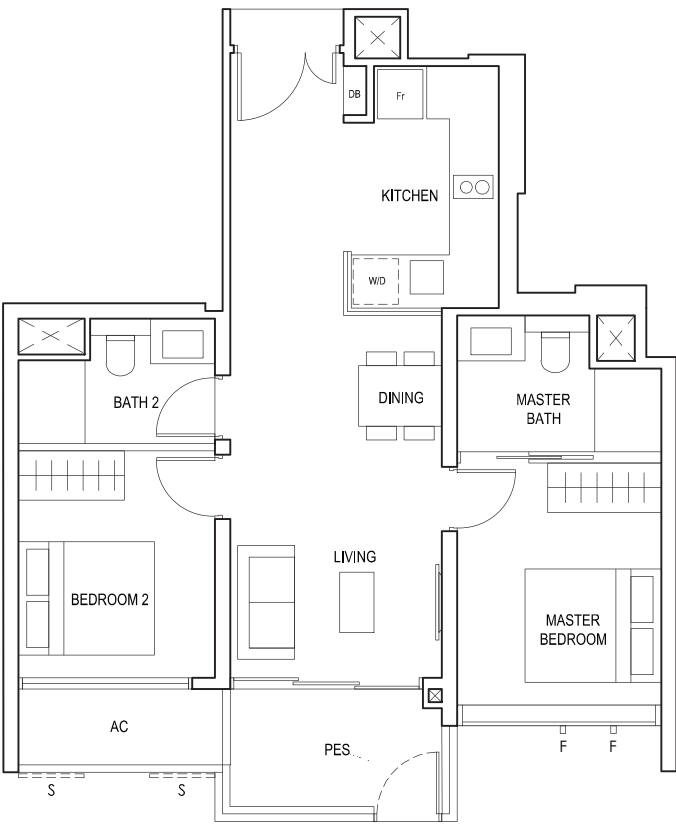
* AREA INCLUDES AIRCON (AC) LEDGE, BALCONY AND PRIVATE ENCLOSED SPACE (PES).
* THE BALCONY/PRIVATE ENCLOSED SPACE (PES) SHALL NOT BE ENCLOSED UNLESS WITH THE APPROVED BALCONY/PES SCREEN. FOR AN ILLUSTRATION OF THE APPROVED BALCONY/PES SCREEN, PLEASE REFER TO THE DIAGRAM ANNEXED HERETO AS "ANNEXURE 1".



2-BEDROOM PREMIUM

TYPE (2P)a1

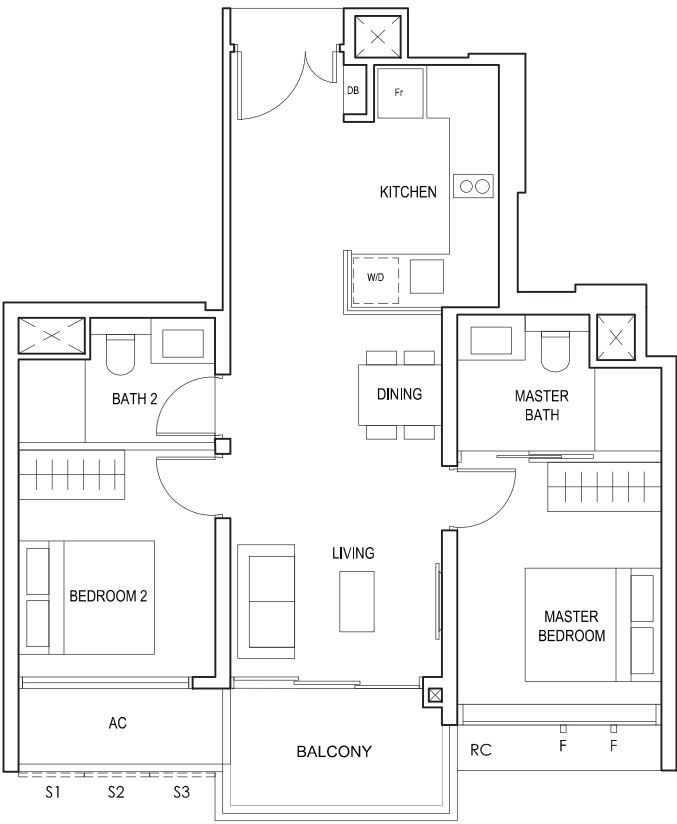
#01-15
65 sq m
700sqft



S - FULL HEIGHT ALUMINIUM PERFORATED SCREEN
F - FULL HEIGHT ALUMINIUM FIN

TYPE (2P)a

#02-15 to #18-15
65 sq m
700sqft

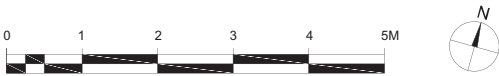
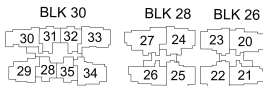


FULL HEIGHT ALUMINIUM PERFORATED SCREEN LOCATED AT LEVELS:
S1 - #02, #03, #05, #06, #07, #09, #10, #11, #13, #14, #15, #17 & #18
S2 - #02, #04, #06, #08, #10, #12, #14, #16 & #18
S3 - #03, #04, #05, #07, #08, #09, #11, #12, #13, #15, #16, #17

F - FULL HEIGHT ALUMINIUM FIN

LEGEND:
Fr - FRIDGE DB - DISTRIBUTION BOARD W/D - WASHER CUM DRYER
AC - AIRCON LEDGE PES - PRIVATE ENCLOSED SPACE RC - REINFORCED CONCRETE LEDGE

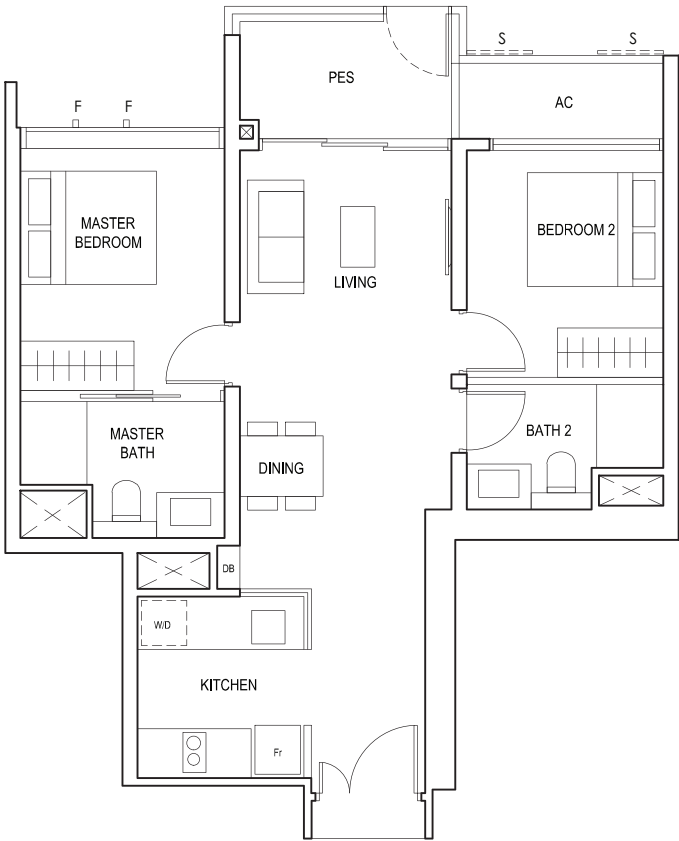
* AREA INCLUDES AIRCON (AC) LEDGE, BALCONY AND PRIVATE ENCLOSED SPACE (PES).
* THE BALCONY/PRIVATE ENCLOSED SPACE (PES) SHALL NOT BE ENCLOSED UNLESS WITH THE APPROVED BALCONY/PES SCREEN. FOR AN ILLUSTRATION OF THE APPROVED BALCONY/PES SCREEN, PLEASE REFER TO THE DIAGRAM ANNEXED HERETO AS "ANNEXURE 1".



2-BEDROOM PREMIUM

TYPE (2P)b1

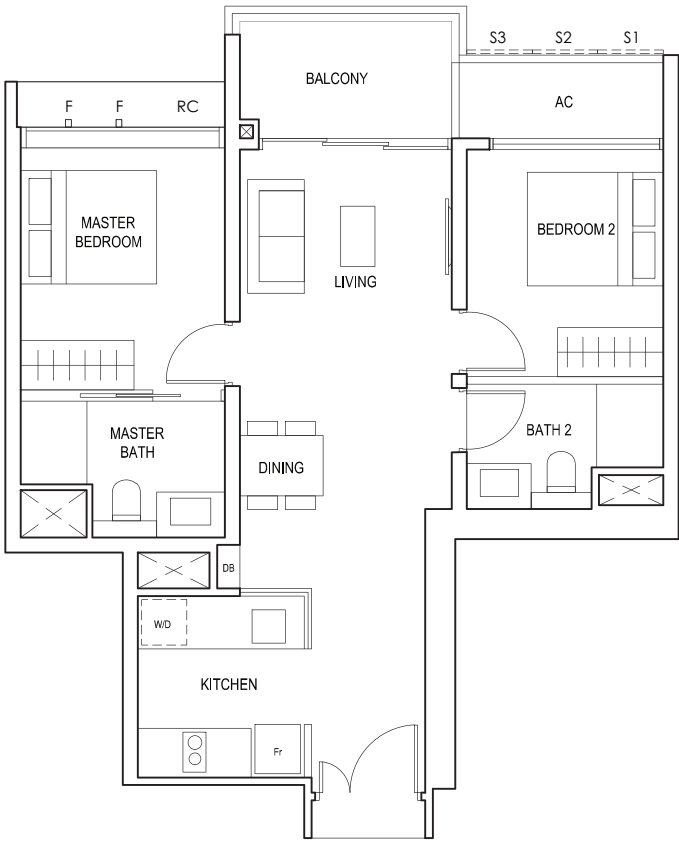
#01-31
66 sq m
710sqft



S - FULL HEIGHT ALUMINIUM PERFORATED SCREEN
F - FULL HEIGHT ALUMINIUM FIN

TYPE (2P)b

#02-31 to #18-31
66 sq m
710sqft

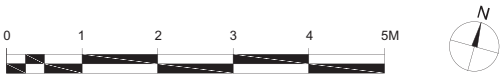
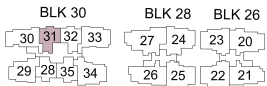
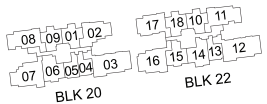


FULL HEIGHT ALUMINIUM PERFORATED SCREEN LOCATED AT LEVELS:
S1 - #02, #03, #05, #06, #07, #09, #10, #11, #13, #14, #15, #17 & #18
S2 - #02, #04, #06, #08, #10, #12, #14, #16 & #18
S3 - #03, #04, #05, #07, #08, #09, #11, #12, #13, #15, #16, #17

F - FULL HEIGHT ALUMINIUM FIN

LEGEND:
Fr - FRIDGE DB - DISTRIBUTION BOARD W/D - WASHER CUM DRYER
AC - AIRCON LEDGE PES - PRIVATE ENCLOSED SPACE RC - REINFORCED CONCRETE LEDGE

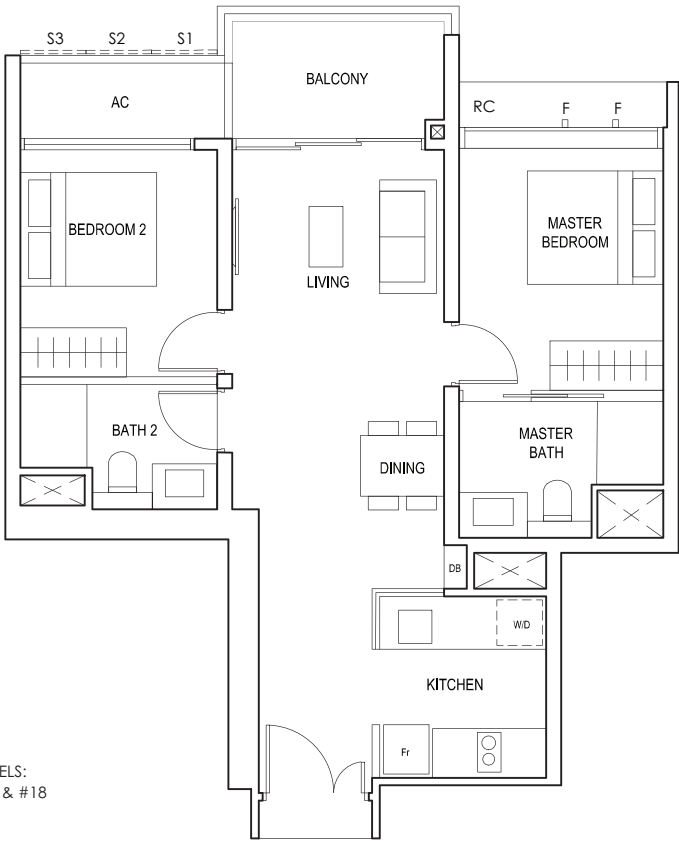
* AREA INCLUDES AIRCON (AC) LEDGE, BALCONY AND PRIVATE ENCLOSED SPACE (PES).
* THE BALCONY/PRIVATE ENCLOSED SPACE (PES) SHALL NOT BE ENCLOSED UNLESS WITH THE APPROVED BALCONY/PES SCREEN. FOR AN ILLUSTRATION OF THE APPROVED BALCONY/PES SCREEN, PLEASE REFER TO THE DIAGRAM ANNEXED HERETO AS "ANNEXURE 1".



2-BEDROOM PREMIUM

TYPE (2P)b

#02-32 to #18-32
66 sq m
710sqft

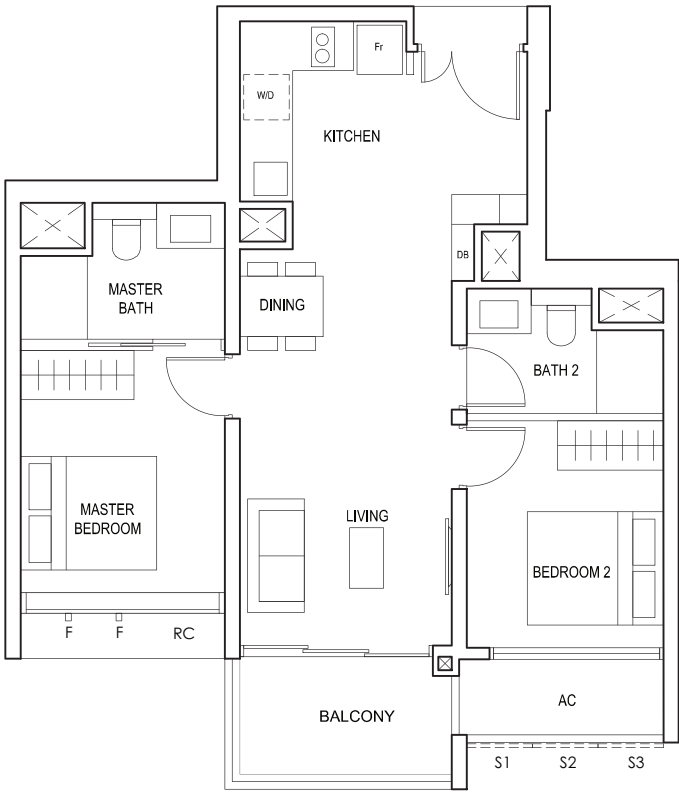


FULL HEIGHT ALUMINIUM PERFORATED SCREEN LOCATED AT LEVELS:
S1 - #02, #03, #05, #06, #07, #09, #10, #11, #13, #14, #15, #17 & #18
S2 - #02, #04, #06, #08, #10, #12, #14, #16 & #18
S3 - #03, #04, #05, #07, #08, #09, #11, #12, #13, #15, #16, #17

F - FULL HEIGHT ALUMINIUM FIN

TYPE (2P)c

#03-35 to #17-35
65 sq m
700sqft

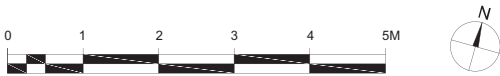
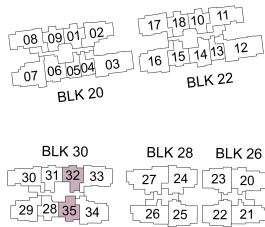


FULL HEIGHT ALUMINIUM PERFORATED SCREEN LOCATED AT LEVELS:
S1 - #03, #05, #06, #07, #09, #10, #11, #13, #14, #15 & #17
S2 - #04, #06, #08, #10, #12, #14 & #16
S3 - #03, #04, #05, #07, #08, #09, #11, #12, #13, #15, #16, #17

F - FULL HEIGHT ALUMINIUM FIN

LEGEND:
Fr - FRIDGE DB - DISTRIBUTION BOARD W/D - WASHER CUM DRYER
AC - AIRCON LEDGE RC - REINFORCED CONCRETE LEDGE

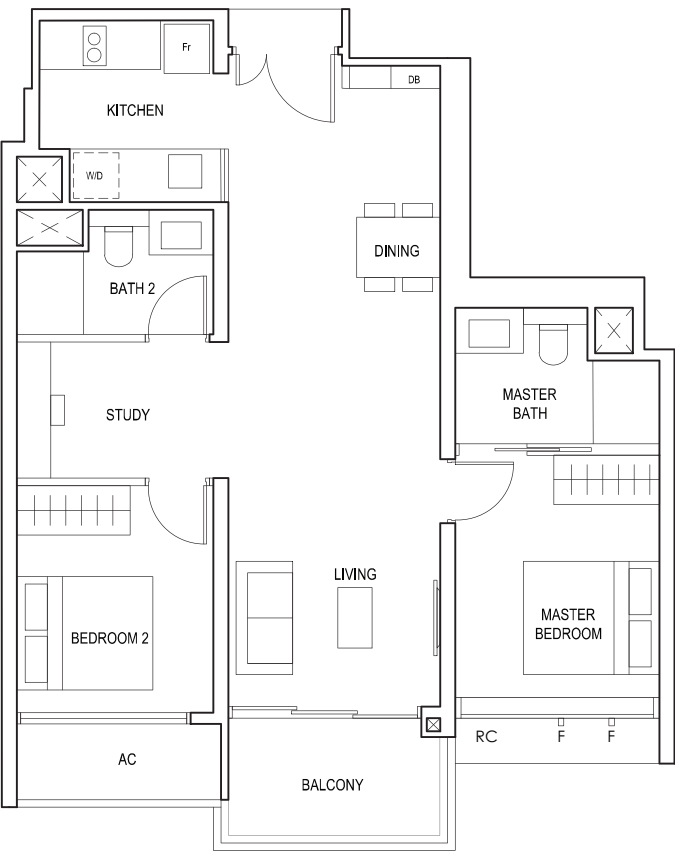
* AREA INCLUDES AIRCON (AC) LEDGE, BALCONY AND PRIVATE ENCLOSED SPACE (PES).
* THE BALCONY/PRIVATE ENCLOSED SPACE (PES) SHALL NOT BE ENCLOSED UNLESS WITH THE APPROVED BALCONY/PES SCREEN. FOR AN ILLUSTRATION OF THE APPROVED BALCONY/PES SCREEN, PLEASE REFER TO THE DIAGRAM ANNEXED HERETO AS "ANNEXURE 1".



2-BEDROOM
(with Study)

TYPE (2+1)a

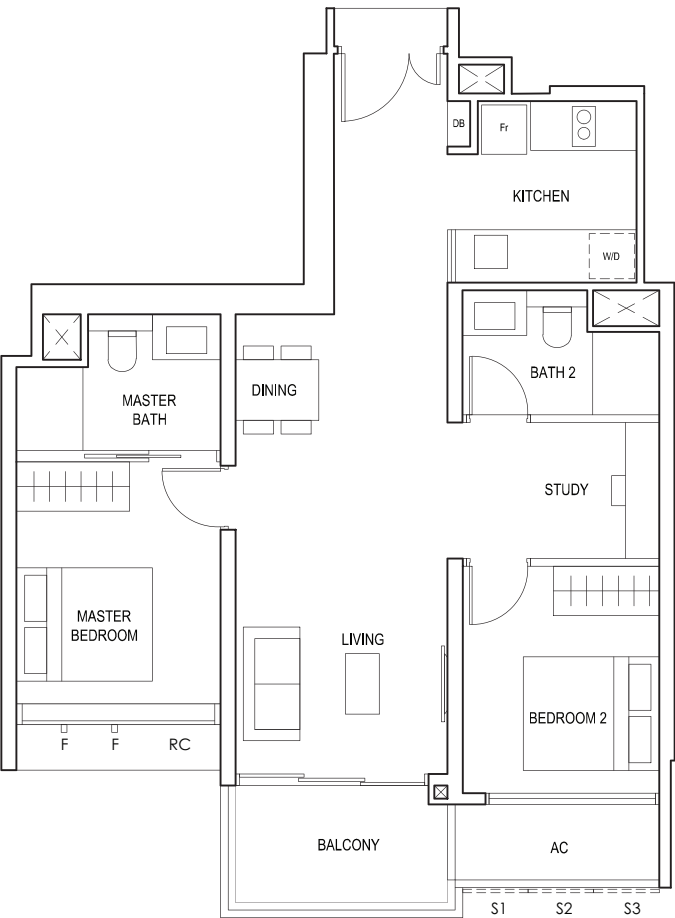
#02-06 to #18-06
75 sq m
807sqft



F - FULL HEIGHT ALUMINIUM FIN

TYPE (2+1)b

#02-14 to #18-14
74 sq m
797sqft

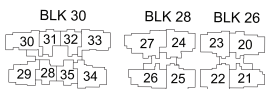
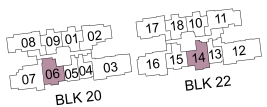


FULL HEIGHT ALUMINIUM PERFORATED SCREEN LOCATED AT LEVELS:
S1 - #02, #03, #05, #06, #07, #09, #10, #11, #13, #14, #15, #17 & #18
S2 - #02, #04, #06, #08, #10, #12, #14, #16 & #18
S3 - #03, #04, #05, #07, #08, #09, #11, #12, #13, #15, #16, #17

F - FULL HEIGHT ALUMINIUM FIN

LEGEND:
Fr - FRIDGE DB - DISTRIBUTION BOARD W/D - WASHER CUM DRYER
AC - AIRCON LEDGE RC - REINFORCED CONCRETE LEDGE

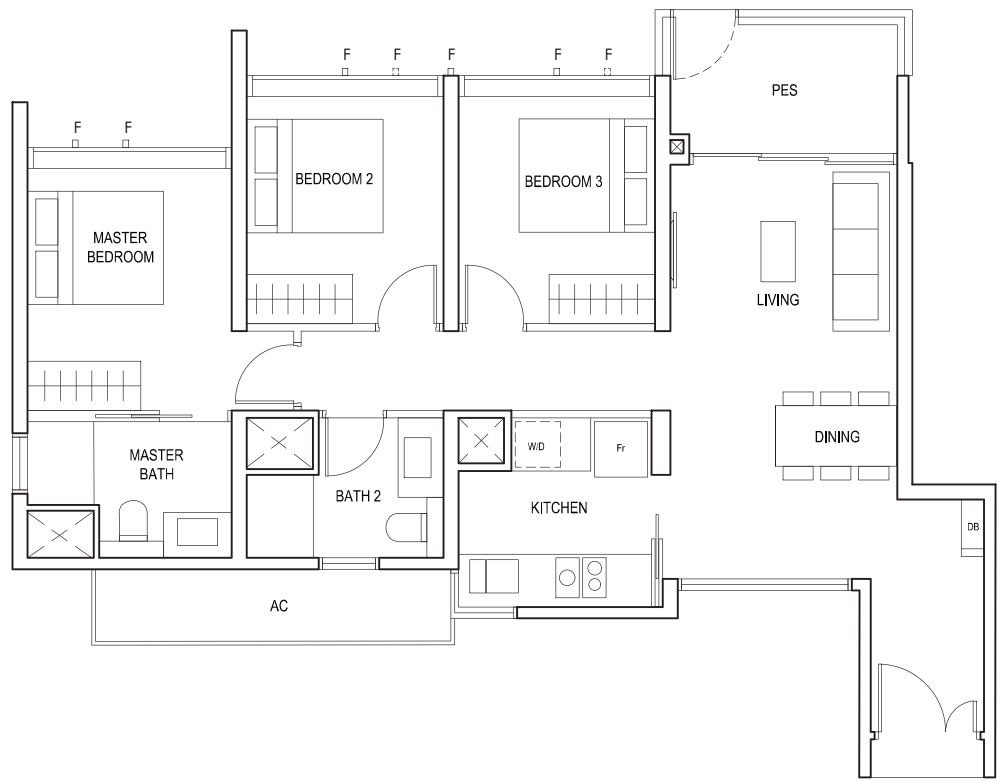
* AREA INCLUDES AIRCON (AC) LEDGE, BALCONY AND PRIVATE ENCLOSED SPACE (PES).
* THE BALCONY/PRIVATE ENCLOSED SPACE (PES) SHALL NOT BE ENCLOSED UNLESS WITH THE APPROVED BALCONY/PES SCREEN. FOR AN ILLUSTRATION OF THE APPROVED BALCONY/PES SCREEN, PLEASE REFER TO THE DIAGRAM ANNEXED HERETO AS "ANNEXURE 1".



3-BEDROOM

TYPE (3)a1

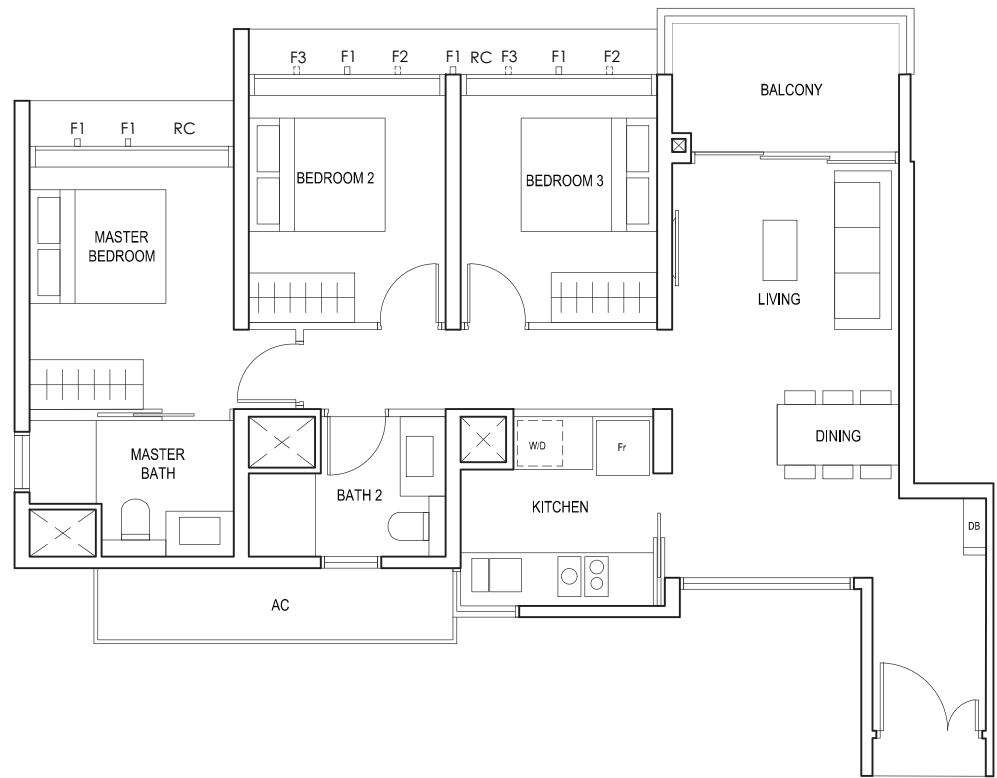
#05-17
87 sq m
936sqft



F - FULL HEIGHT ALUMINIUM FIN

TYPE (3)a

#06-17 to #18-17
87 sq m
936sqft

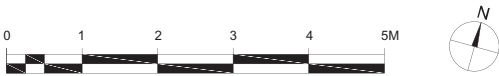
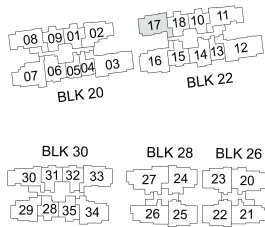


FULL HEIGHT ALUMINIUM FIN LOCATED AT LEVELS:

- F1 - #06 to #18
- F2 - #06, #09, #10, #13, #14, #17 & #18
- F3 - #07, #08, #11, #12, #15 & #16

LEGEND:
Fr - FRIDGE DB - DISTRIBUTION BOARD W/D - WASHER CUM DRYER
AC - AIRCON LEDGE PES - PRIVATE ENCLOSED SPACE RC - REINFORCED CONCRETE LEDGE

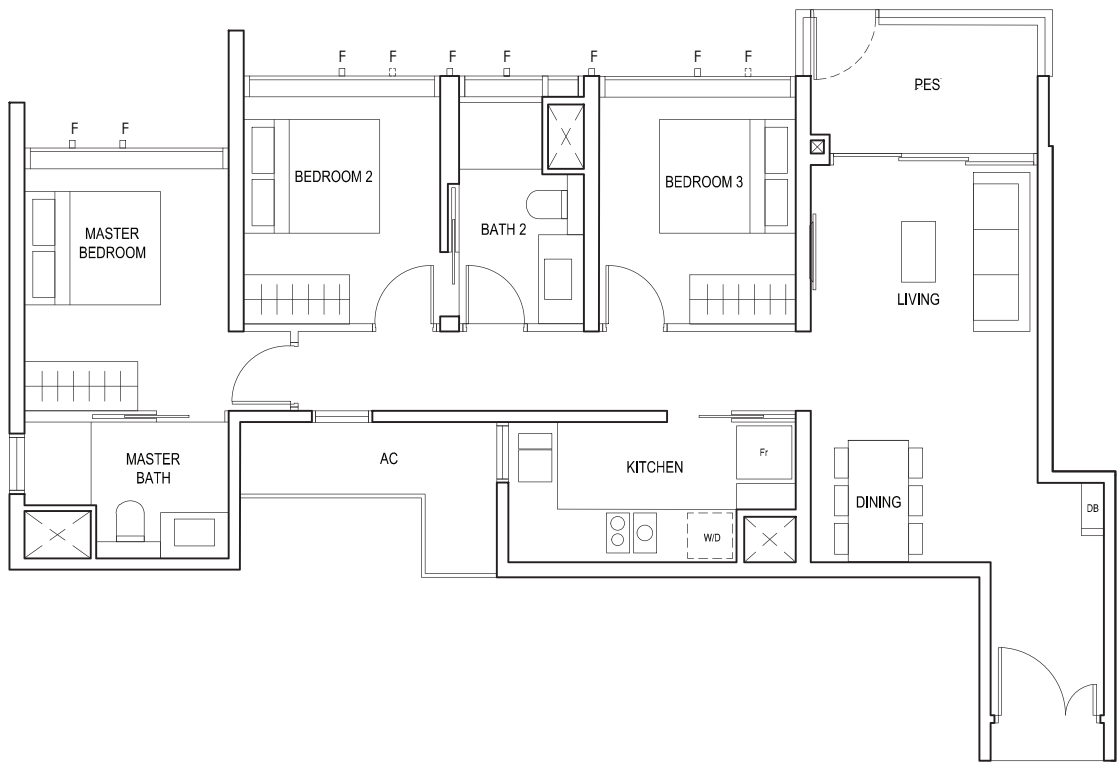
* AREA INCLUDES AIRCON (AC) LEDGE, BALCONY AND PRIVATE ENCLOSED SPACE (PES).
* THE BALCONY/PRIVATE ENCLOSED SPACE (PES) SHALL NOT BE ENCLOSED UNLESS WITH THE APPROVED BALCONY/PES SCREEN. FOR AN ILLUSTRATION OF THE APPROVED BALCONY/PES SCREEN, PLEASE REFER TO THE DIAGRAM ANNEXED HERETO AS "ANNEXURE 1".



3-BEDROOM

TYPE (3)b1

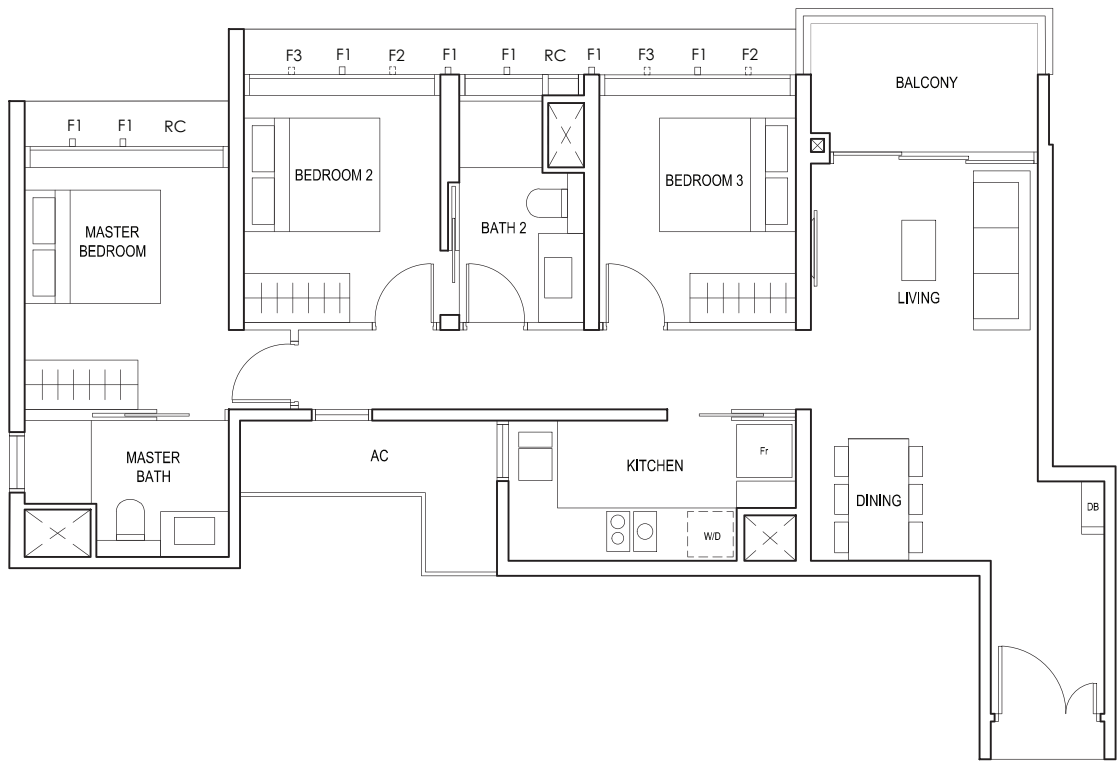
#05-08
89 sq m
958sqft



F - FULL HEIGHT ALUMINIUM FIN

TYPE (3)b

#06-08 to #18-08
89 sq m
958sqft



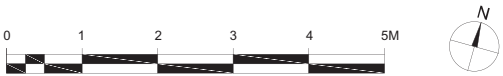
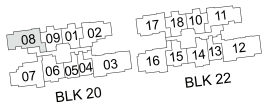
FULL HEIGHT ALUMINIUM FIN LOCATED AT LEVELS:

- F1 - #06 to #18
- F2 - #06, #09, #10, #13, #14, #17 & #18
- F3 - #07, #08, #11, #12, #15 & #16

LEGEND:

Fr - FRIDGE DB - DISTRIBUTION BOARD W/D - WASHER CUM DRYER
AC - AIRCON LEDGE PES - PRIVATE ENCLOSED SPACE RC - REINFORCED CONCRETE LEDGE

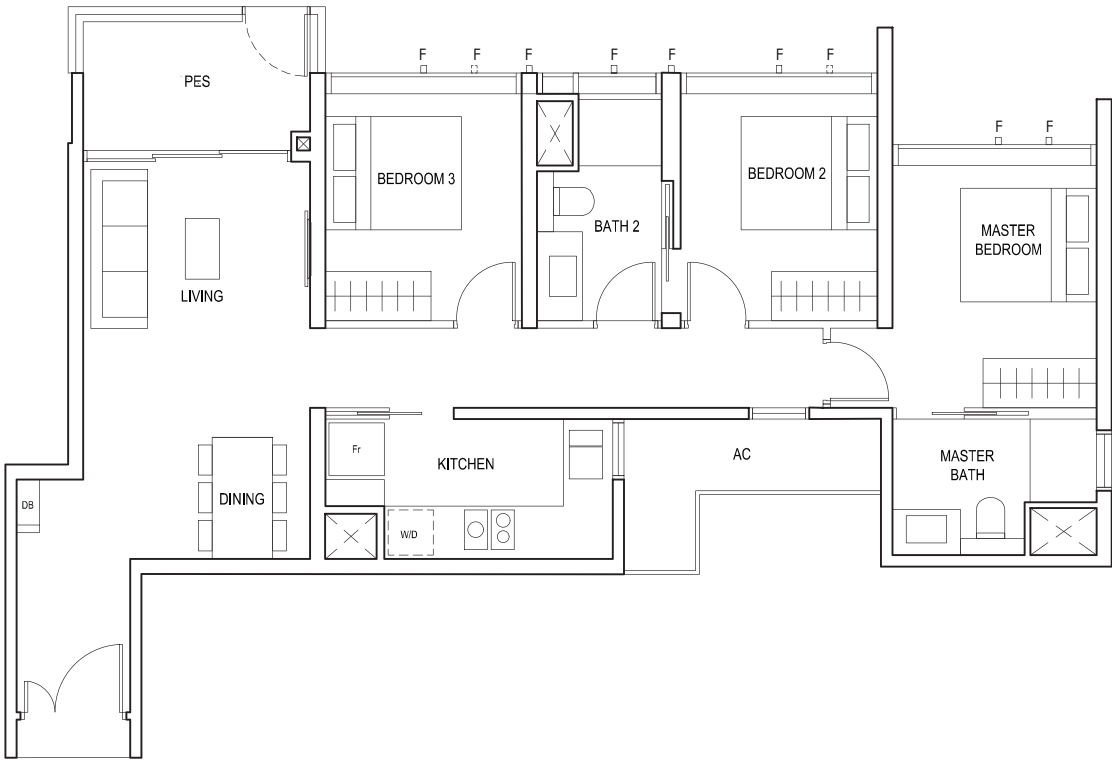
* AREA INCLUDES AIRCON (AC) LEDGE, BALCONY AND PRIVATE ENCLOSED SPACE (PES).
* THE BALCONY/PRIVATE ENCLOSED SPACE (PES) SHALL NOT BE ENCLOSED UNLESS WITH THE APPROVED BALCONY/PES SCREEN. FOR AN ILLUSTRATION OF THE APPROVED BALCONY/PES SCREEN, PLEASE REFER TO THE DIAGRAM ANNEXED HERETO AS "ANNEXURE 1".



3-BEDROOM

TYPE (3)b1

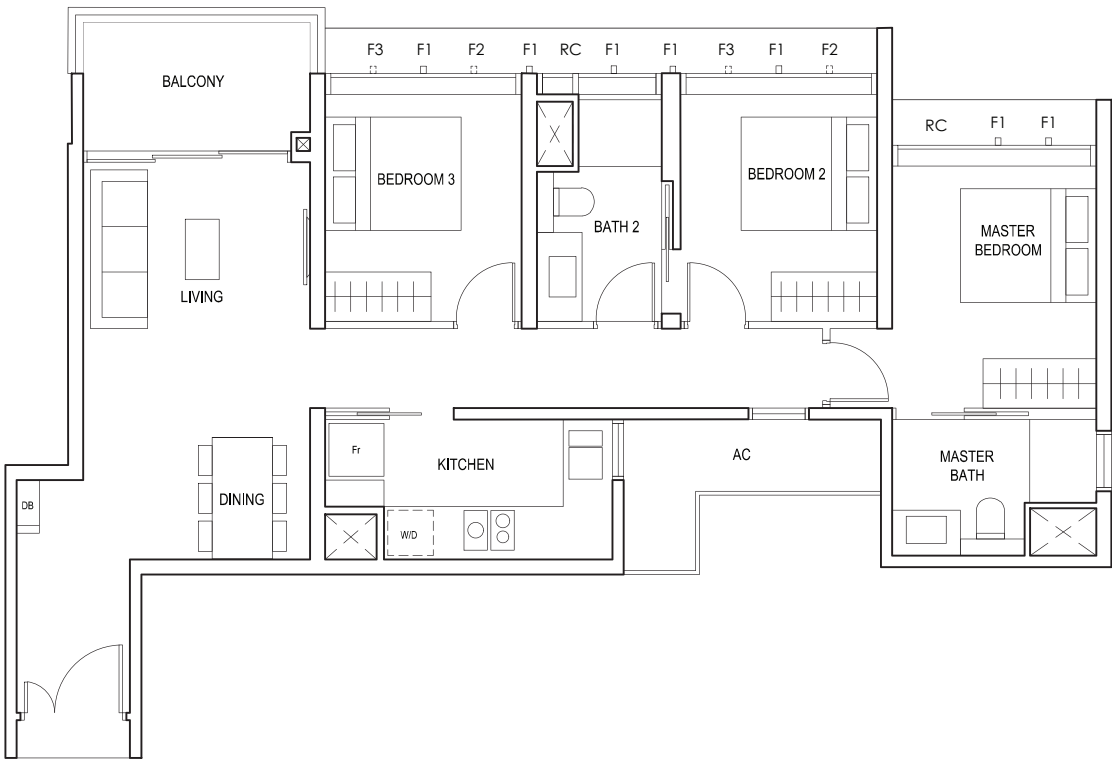
#05-11
89 sq m
958sqft



F - FULL HEIGHT ALUMINIUM FIN

TYPE (3)b

#06-11 to #18-11
89 sq m
958sqft

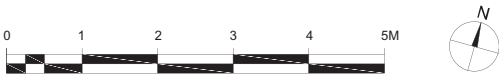
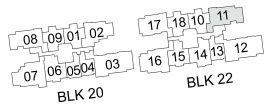


FULL HEIGHT ALUMINIUM FIN LOCATED AT LEVELS:

- F1 - #06 to #18
- F2 - #06, #09, #10, #13, #14, #17 & #18
- F3 - #07, #08, #11, #12, #15 & #16

LEGEND:
Fr - FRIDGE DB - DISTRIBUTION BOARD W/D - WASHER CUM DRYER
AC - AIRCON LEDGE PES - PRIVATE ENCLOSED SPACE RC - REINFORCED CONCRETE LEDGE

* AREA INCLUDES AIRCON (AC) LEDGE, BALCONY AND PRIVATE ENCLOSED SPACE (PES).
* THE BALCONY/PRIVATE ENCLOSED SPACE (PES) SHALL NOT BE ENCLOSED UNLESS WITH THE APPROVED BALCONY/PES SCREEN. FOR AN ILLUSTRATION OF THE APPROVED BALCONY/PES SCREEN, PLEASE REFER TO THE DIAGRAM ANNEXED HERETO AS "ANNEXURE 1".



3-BEDROOM

TYPE (3)c

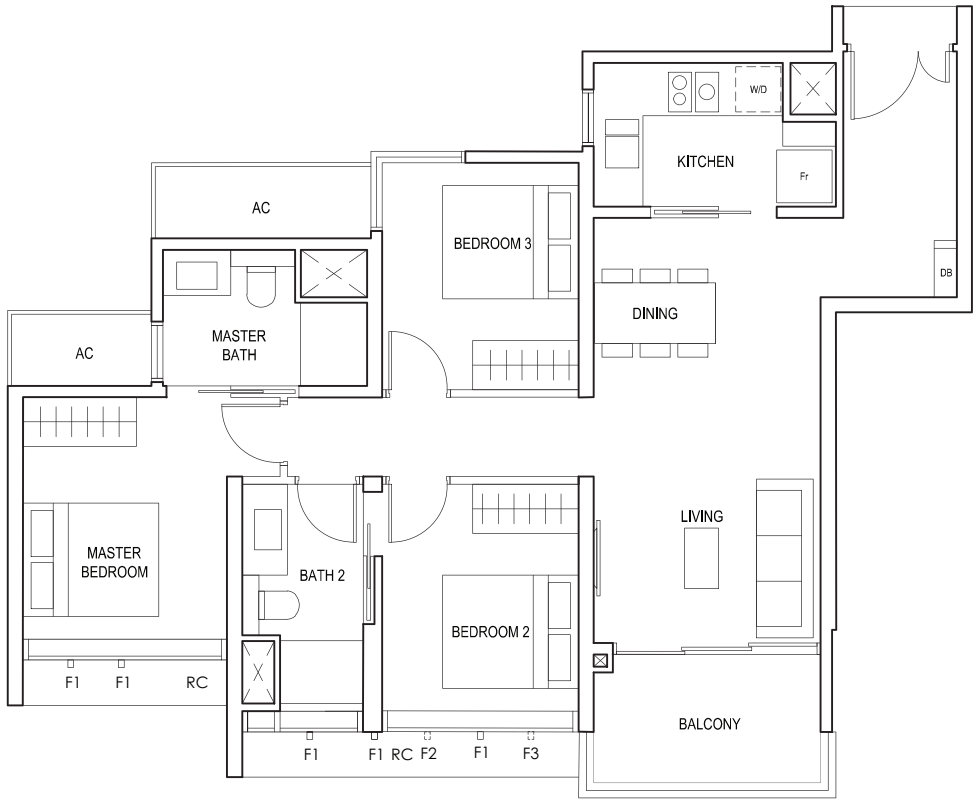
#03-30 to #18-30
91 sq m
980sqft



FULL HEIGHT ALUMINIUM FIN LOCATED AT LEVELS:
F1 - #03 to #18
F2 - #05, #06, #09, #10, #13, #14, #17 & #18
F3 - #03, #04, #07, #08, #11, #12, #15 & #16

TYPE (3)e

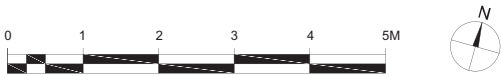
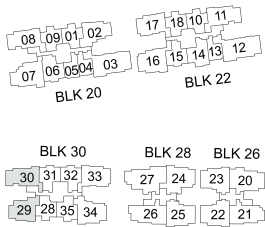
#03-29 to #17-29
87 sq m
936sqft



FULL HEIGHT ALUMINIUM FIN LOCATED AT LEVELS:
F1 - #03 to #17
F2 - #05, #06, #09, #10, #13, #14 & #17
F3 - #03, #04, #07, #08, #11, #12, #15 & #16

LEGEND:
Fr - FRIDGE DB - DISTRIBUTION BOARD W/D - WASHER CUM DRYER
AC - AIRCON LEDGE RC - REINFORCED CONCRETE LEDGE

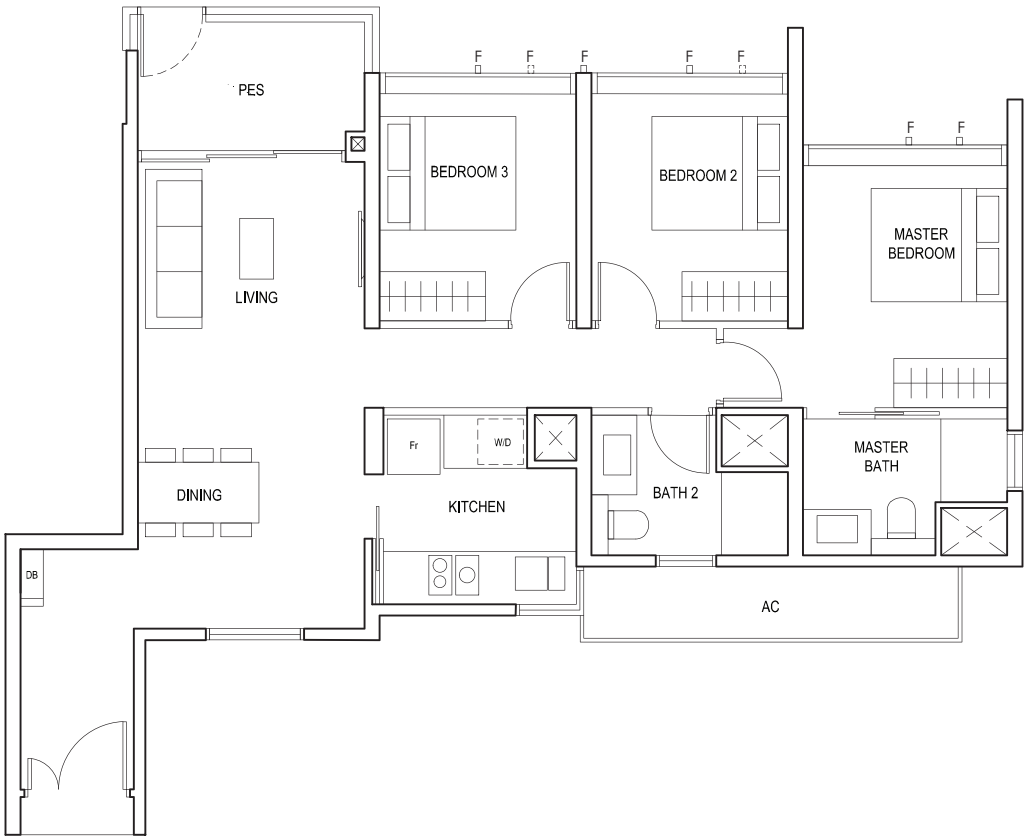
* AREA INCLUDES AIRCON (AC) LEDGE, BALCONY AND PRIVATE ENCLOSED SPACE (PES).
* THE BALCONY/PRIVATE ENCLOSED SPACE (PES) SHALL NOT BE ENCLOSED UNLESS WITH THE APPROVED BALCONY/PES SCREEN. FOR AN ILLUSTRATION OF THE APPROVED BALCONY/PES SCREEN, PLEASE REFER TO THE DIAGRAM ANNEXED HERETO AS "ANNEXURE 1".



3-BEDROOM

TYPE (3)d1

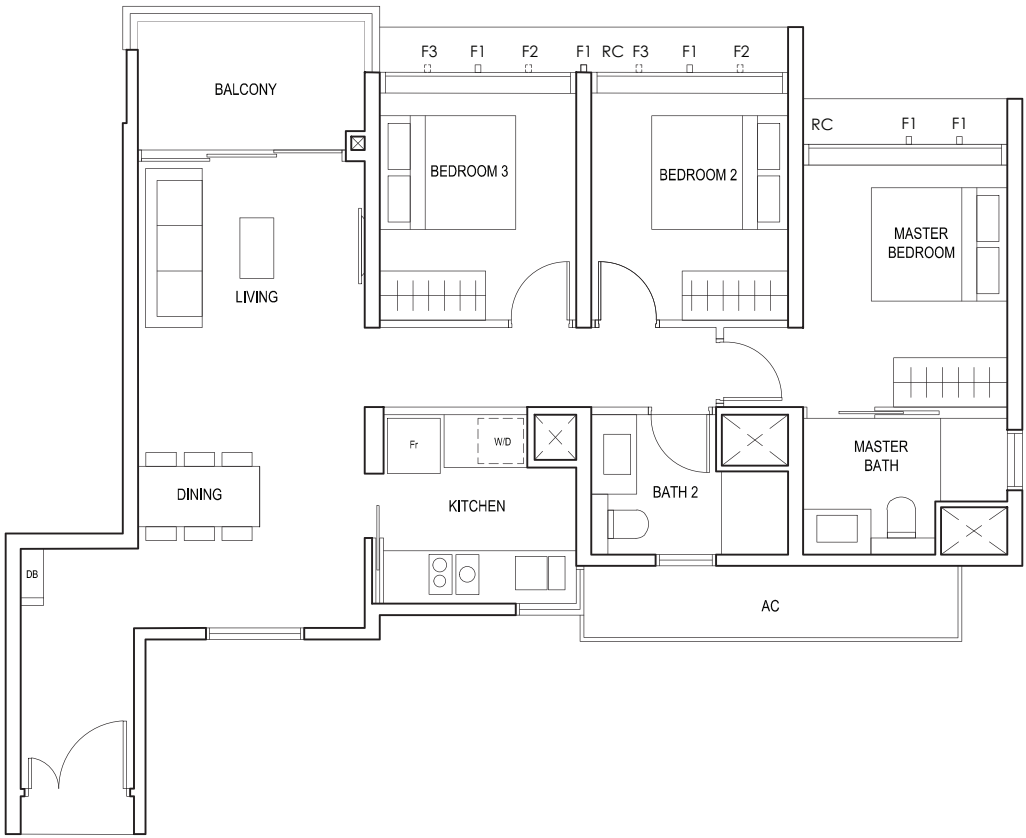
#01-33
90 sq m
969sqft



F - FULL HEIGHT ALUMINIUM FIN

TYPE (3)d

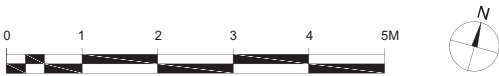
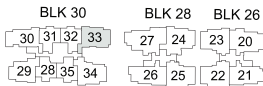
#02-33 to #18-33
90 sq m
969sqft



FULL HEIGHT ALUMINIUM FIN LOCATED AT LEVELS:
F1 - #02 to #18
F2 - #02, #05, #06, #09, #10, #13, #14, #17 & #18
F3 - #03, #04, #07, #08, #11, #12, #15 & #16

LEGEND:
Fr - FRIDGE DB - DISTRIBUTION BOARD W/D - WASHER CUM DRYER
AC - AIRCON LEDGE PES - PRIVATE ENCLOSED SPACE RC - REINFORCED CONCRETE LEDGE

* AREA INCLUDES AIRCON (AC) LEDGE, BALCONY AND PRIVATE ENCLOSED SPACE (PES).
* THE BALCONY/PRIVATE ENCLOSED SPACE (PES) SHALL NOT BE ENCLOSED UNLESS WITH THE APPROVED BALCONY/PES SCREEN. FOR AN ILLUSTRATION OF THE APPROVED BALCONY/PES SCREEN, PLEASE REFER TO THE DIAGRAM ANNEXED HERETO AS "ANNEXURE 1".



3-BEDROOM

TYPE (3)f1

#05-02
88 sq m
947sqft



F - FULL HEIGHT ALUMINIUM FIN

TYPE (3)f

#06-02 to #18-02
88 sq m
947sqft

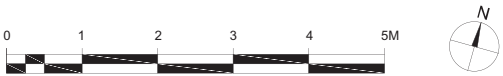
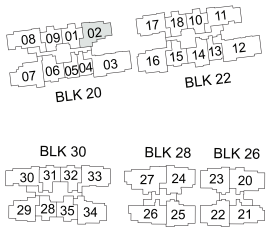


FULL HEIGHT ALUMINIUM FIN LOCATED AT LEVELS:

- F1 - #06 to #18
- F2 - #06, #09, #10, #13, #14, #17 & #18
- F3 - #07, #08, #11, #12, #15 & #16

LEGEND:
Fr - FRIDGE DB - DISTRIBUTION BOARD W/D - WASHER CUM DRYER
AC - AIRCON LEDGE PES - PRIVATE ENCLOSED SPACE RC - REINFORCED CONCRETE LEDGE

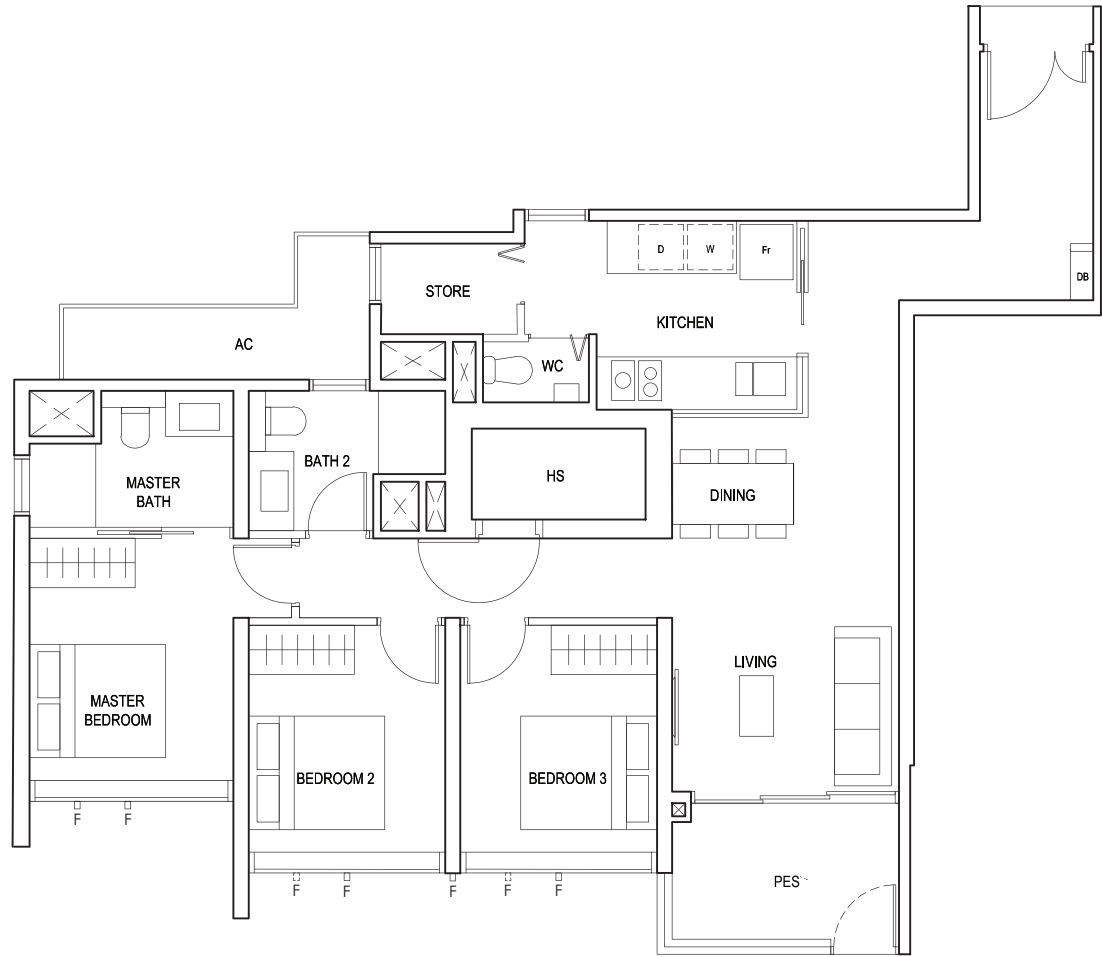
* AREA INCLUDES AIRCON (AC) LEDGE, BALCONY AND PRIVATE ENCLOSED SPACE (PES).
* THE BALCONY/PRIVATE ENCLOSED SPACE (PES) SHALL NOT BE ENCLOSED UNLESS WITH THE APPROVED BALCONY/PES SCREEN. FOR AN ILLUSTRATION OF THE APPROVED BALCONY/PES SCREEN, PLEASE REFER TO THE DIAGRAM ANNEXED HERETO AS "ANNEXURE 1".



3-BEDROOM PREMIUM

TYPE (3Y)a1

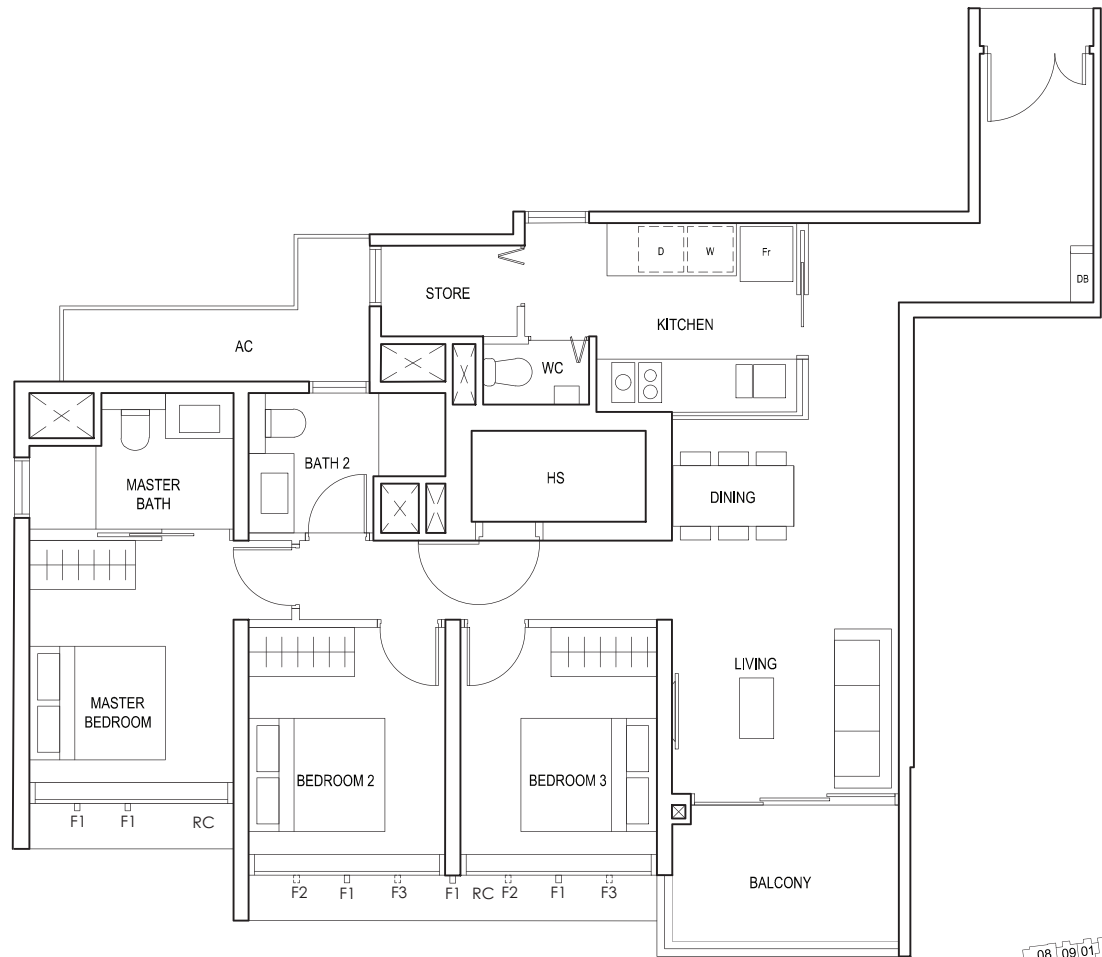
#01-16
102 sq m
1098sqft



F - FULL HEIGHT ALUMINIUM FIN

TYPE (3Y)a

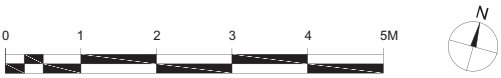
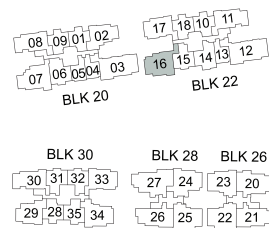
#02-16 to #18-16
102 sq m
1098sqft



FULL HEIGHT ALUMINIUM FIN LOCATED AT LEVELS:
F1 - #02 to #18
F2 - #02, #05, #06, #09, #10, #13, #14, #17 & #18
F3 - #03, #04, #07, #08, #11, #12, #15 & #16

LEGEND:
Fr - FRIDGE DB - DISTRIBUTION BOARD WC - WATER CLOSET W - WASHER D - DRYER
AC - AIRCON LEDGE PES - PRIVATE ENCLOSED SPACE RC - REINFORCED CONCRETE LEDGE HS - HOUSEHOLD SHELTER

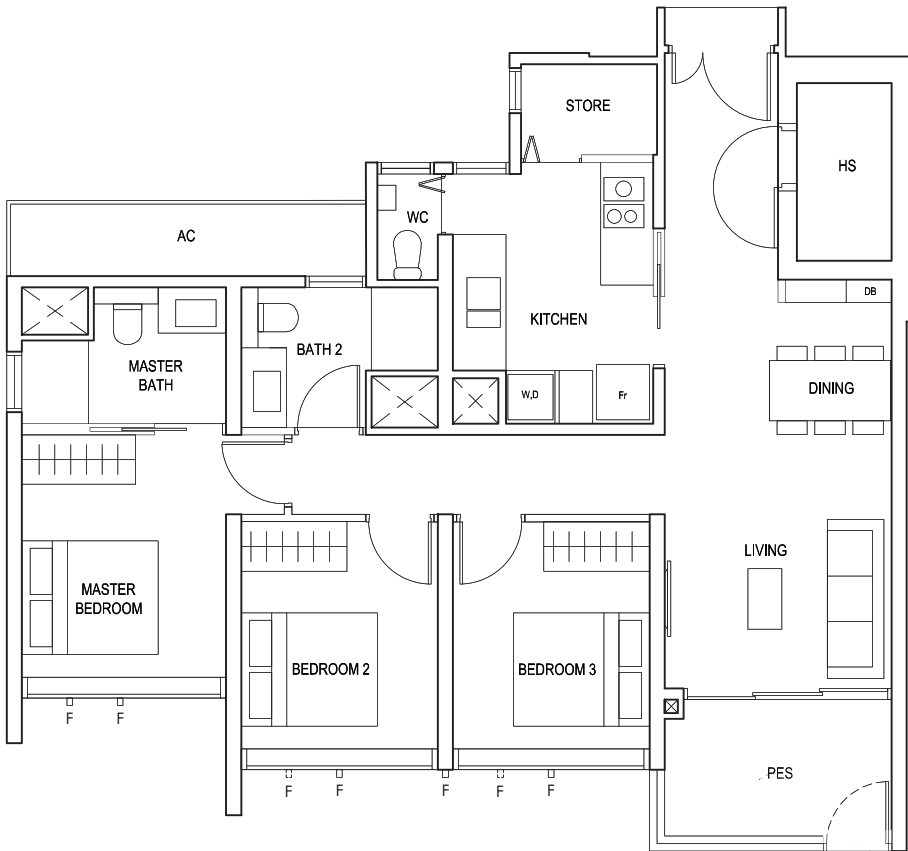
* AREA INCLUDES AIRCON (AC) LEDGE, BALCONY AND PRIVATE ENCLOSED SPACE (PES).
* THE BALCONY/PRIVATE ENCLOSED SPACE (PES) SHALL NOT BE ENCLOSED UNLESS WITH THE APPROVED BALCONY/PES SCREEN. FOR AN ILLUSTRATION OF THE APPROVED BALCONY/PES SCREEN, PLEASE REFER TO THE DIAGRAM ANNEXED HERETO AS "ANNEXURE 1".



3-BEDROOM PREMIUM

TYPE (3Y)b1

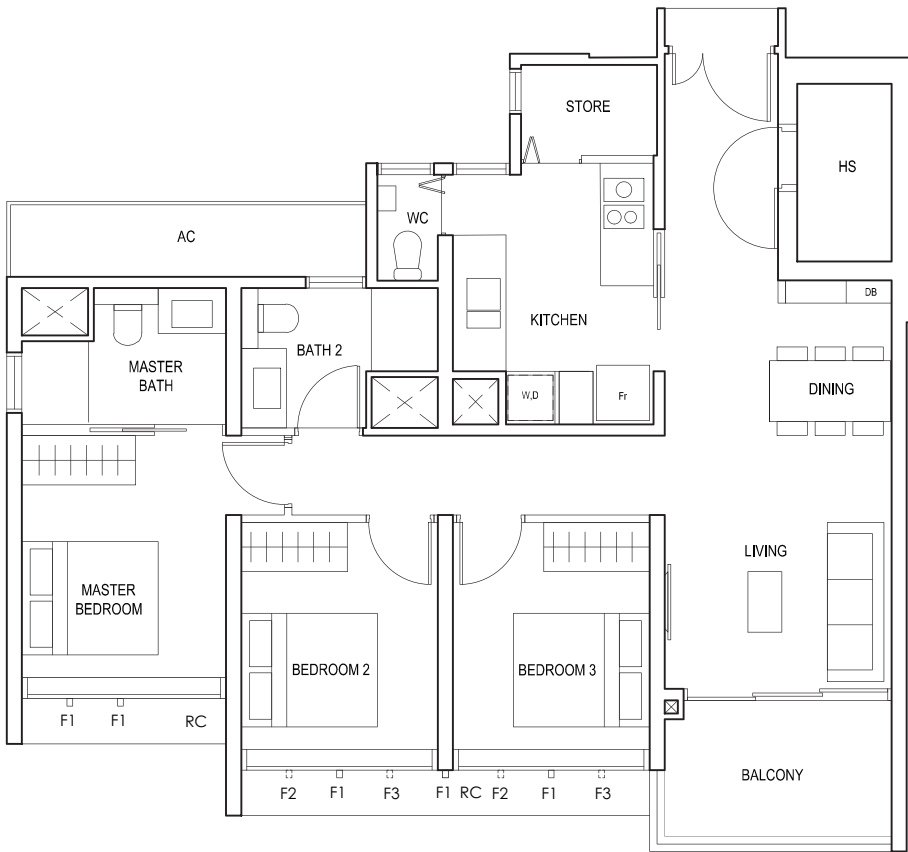
#01-22
98 sq m
1055sqft



F - FULL HEIGHT ALUMINIUM FIN

TYPE (3Y)b

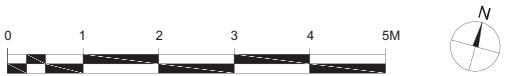
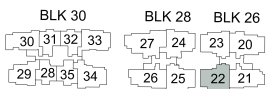
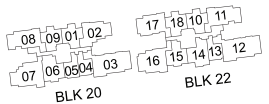
#02-22 to #18-22
98 sq m
1055sqft



FULL HEIGHT ALUMINIUM FIN LOCATED AT LEVELS:
F1 - #02 to #18
F2 - #02, #05, #06, #09, #10, #13, #14, #17 & #18
F3 - #03, #04, #07, #08, #11, #12, #15 & #16

LEGEND:
Fr - FRIDGE DB - DISTRIBUTION BOARD WC - WATER CLOSET W - WASHER D - DRYER
AC - AIRCON LEDGE PES - PRIVATE ENCLOSED SPACE RC - REINFORCED CONCRETE LEDGE HS - HOUSEHOLD SHELTER

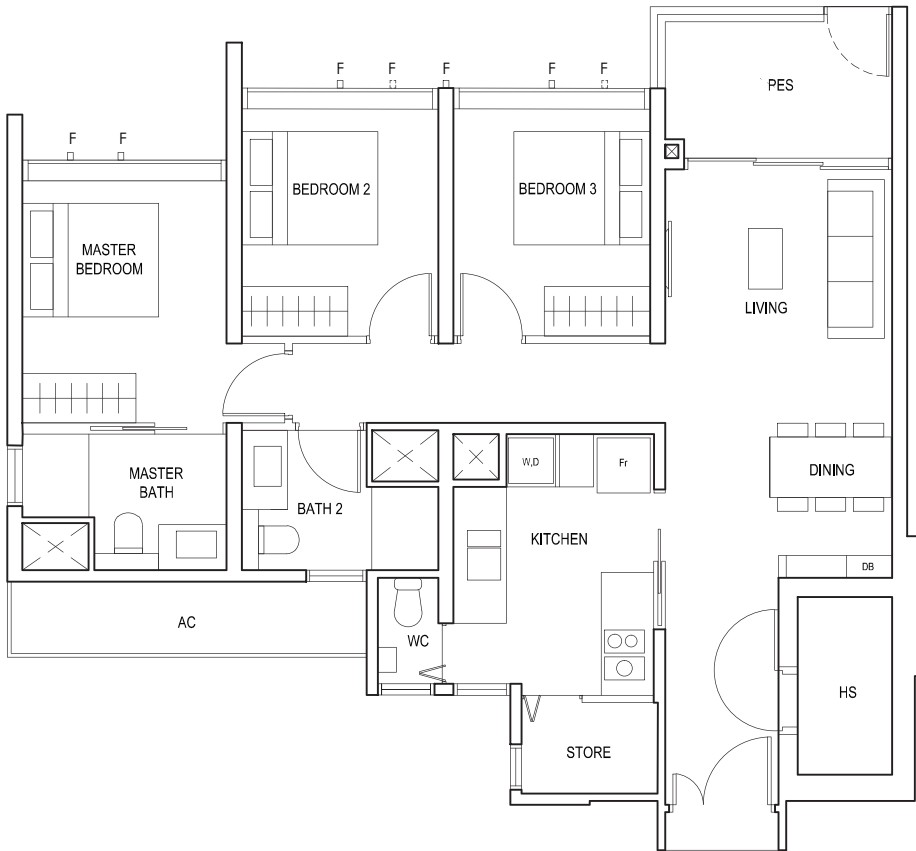
* AREA INCLUDES AIRCON (AC) LEDGE, BALCONY AND PRIVATE ENCLOSED SPACE (PES).
* THE BALCONY/PRIVATE ENCLOSED SPACE (PES) SHALL NOT BE ENCLOSED UNLESS WITH THE APPROVED BALCONY/PES SCREEN. FOR AN ILLUSTRATION OF THE APPROVED BALCONY/PES SCREEN, PLEASE REFER TO THE DIAGRAM ANNEXED HERETO AS "ANNEXURE 1".



3-BEDROOM PREMIUM

TYPE (3Y)b1

#01-23
98 sq m
1055sqft

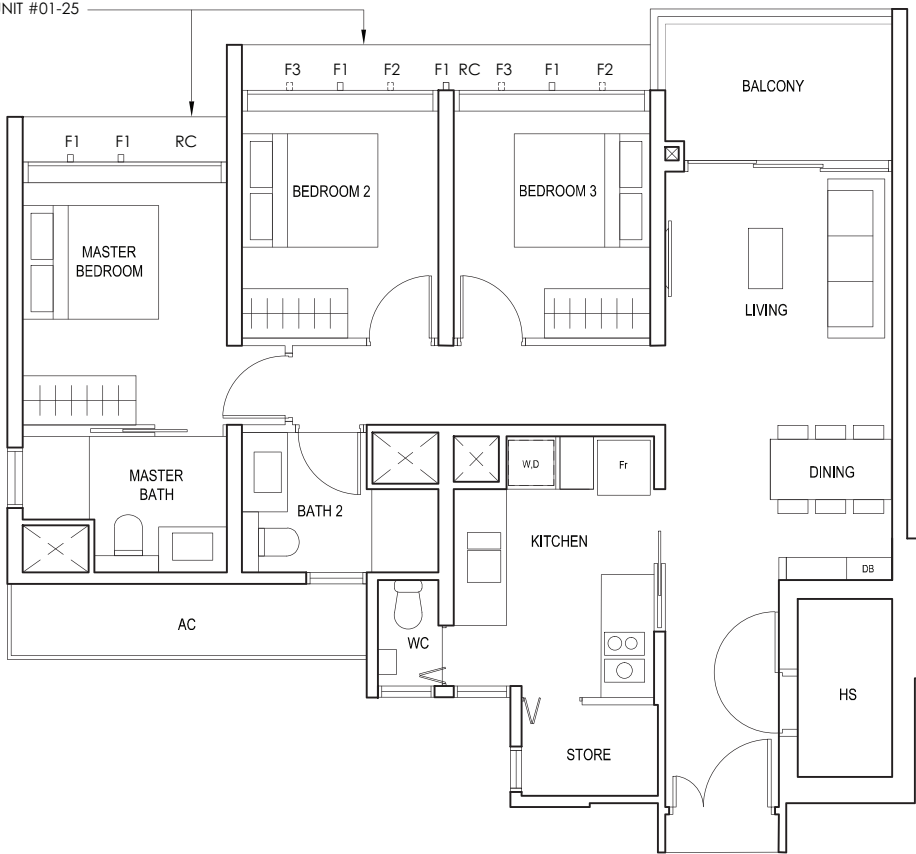


F - FULL HEIGHT ALUMINIUM FIN

TYPE (3Y)b

#02-23 to #18-23
#01-25 to #18-25
98 sq m
1055sqft

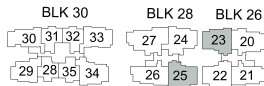
NOT APPLICABLE TO UNIT #01-25



FULL HEIGHT ALUMINIUM FIN LOCATED AT LEVELS:
F1 - #01 to #18
F2 - #01, #02, #05, #06, #09, #10, #13, #14, #17 & #18
F3 - #03, #04, #07, #08, #11, #12, #15 & #16

LEGEND:
Fr - FRIDGE DB - DISTRIBUTION BOARD WC - WATER CLOSET W - WASHER D - DRYER
AC - AIRCON LEDGE PES - PRIVATE ENCLOSED SPACE RC - REINFORCED CONCRETE LEDGE HS - HOUSEHOLD SHELTER

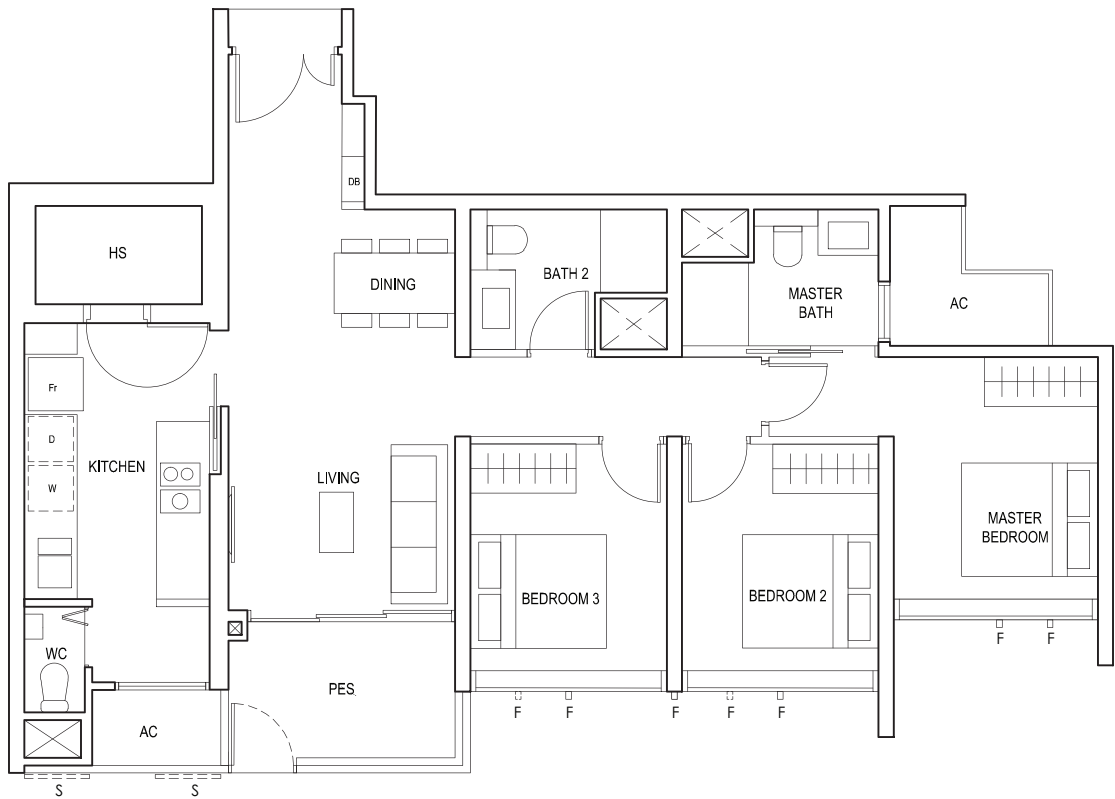
* AREA INCLUDES AIRCON (AC) LEDGE, BALCONY AND PRIVATE ENCLOSED SPACE (PES).
* THE BALCONY/PRIVATE ENCLOSED SPACE (PES) SHALL NOT BE ENCLOSED UNLESS WITH THE APPROVED BALCONY/PES SCREEN. FOR AN ILLUSTRATION OF THE APPROVED BALCONY/PES SCREEN, PLEASE REFER TO THE DIAGRAM ANNEXED HERETO AS "ANNEXURE 1".



3-BEDROOM PREMIUM

TYPE (3Y)c1

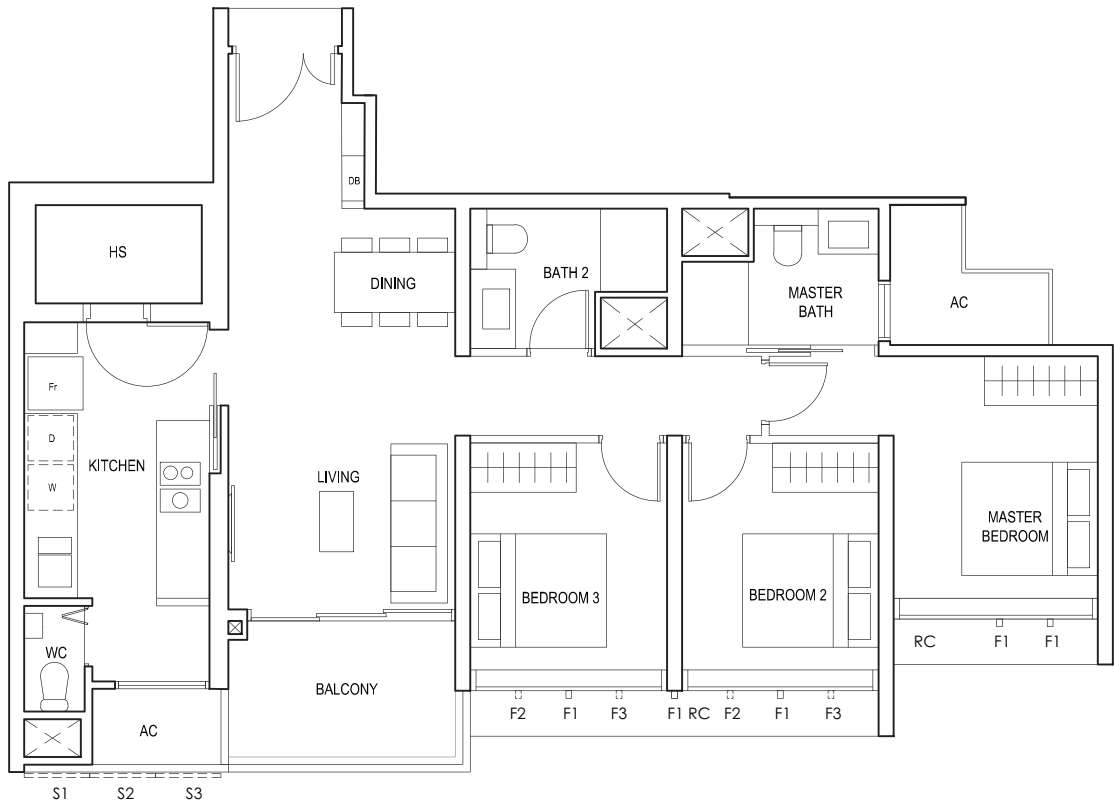
#01-21
97 sq m
1044sqft



S - FULL HEIGHT ALUMINIUM PERFORATED SCREEN
F - FULL HEIGHT ALUMINIUM FIN

TYPE (3Y)c

#02-21 to #18-21
97 sq m
1044sqft

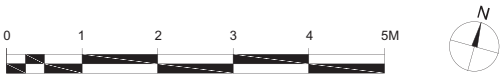
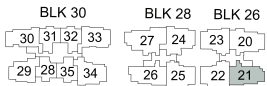
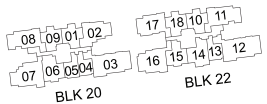


FULL HEIGHT ALUMINIUM PERFORATED SCREEN LOCATED AT LEVELS:
S1 - #02, #03, #05, #06, #07, #09, #10, #11, #13, #14, #15, #17 & #18
S2 - #02, #04, #06, #08, #10, #12, #14, #16 & #18
S3 - #03, #04, #05, #07, #08, #09, #11, #12, #13, #15, #16, #17

FULL HEIGHT ALUMINIUM FIN LOCATED AT LEVELS:
F1 - #02 to #18
F2 - #02, #05, #06, #09, #10, #13, #14, #17 & #18
F3 - #03, #04, #07, #08, #11, #12, #15 & #16

LEGEND:
Fr - FRIDGE DB - DISTRIBUTION BOARD WC - WATER CLOSET W - WASHER D - DRYER
AC - AIRCON LEDGE PES - PRIVATE ENCLOSED SPACE RC - REINFORCED CONCRETE LEDGE HS - HOUSEHOLD SHELTER

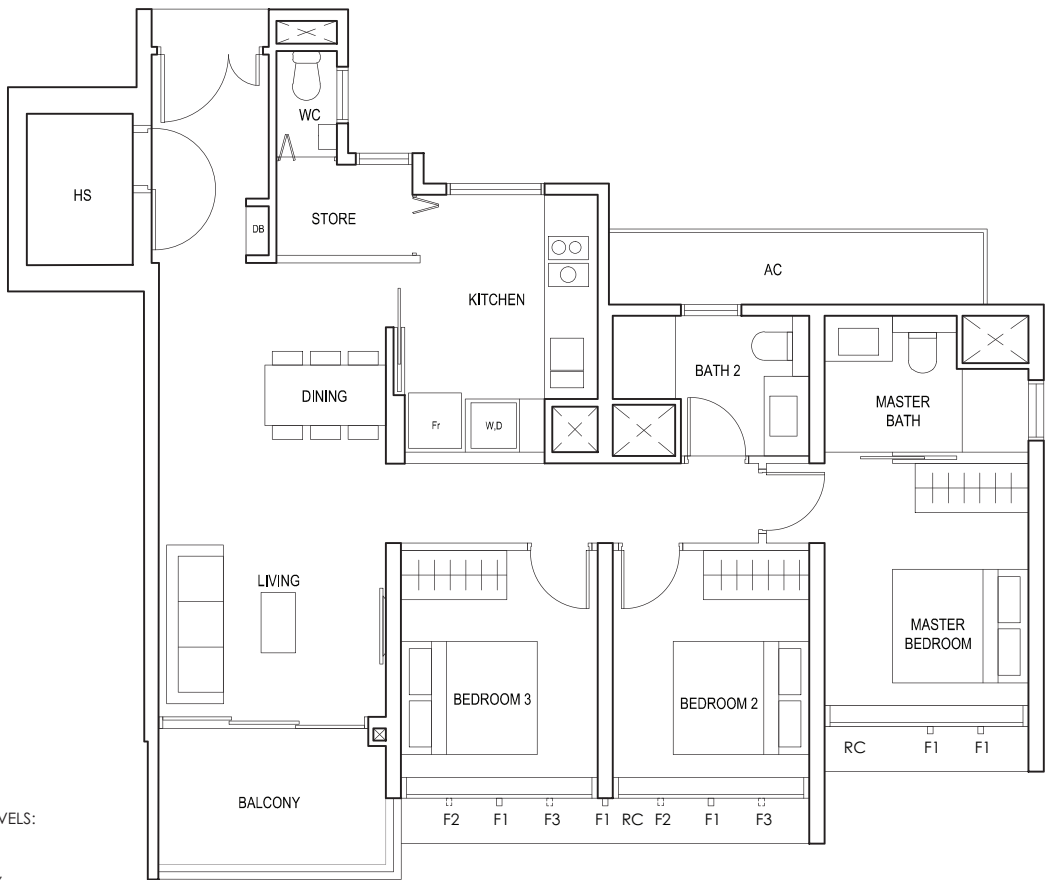
* AREA INCLUDES AIRCON (AC) LEDGE, BALCONY AND PRIVATE ENCLOSED SPACE (PES).
* THE BALCONY/PRIVATE ENCLOSED SPACE (PES) SHALL NOT BE ENCLOSED UNLESS WITH THE APPROVED BALCONY/PES SCREEN. FOR AN ILLUSTRATION OF THE APPROVED BALCONY/PES SCREEN, PLEASE REFER TO THE DIAGRAM ANNEXED HERETO AS "ANNEXURE 1".



3-BEDROOM PREMIUM

TYPE (3Y)d

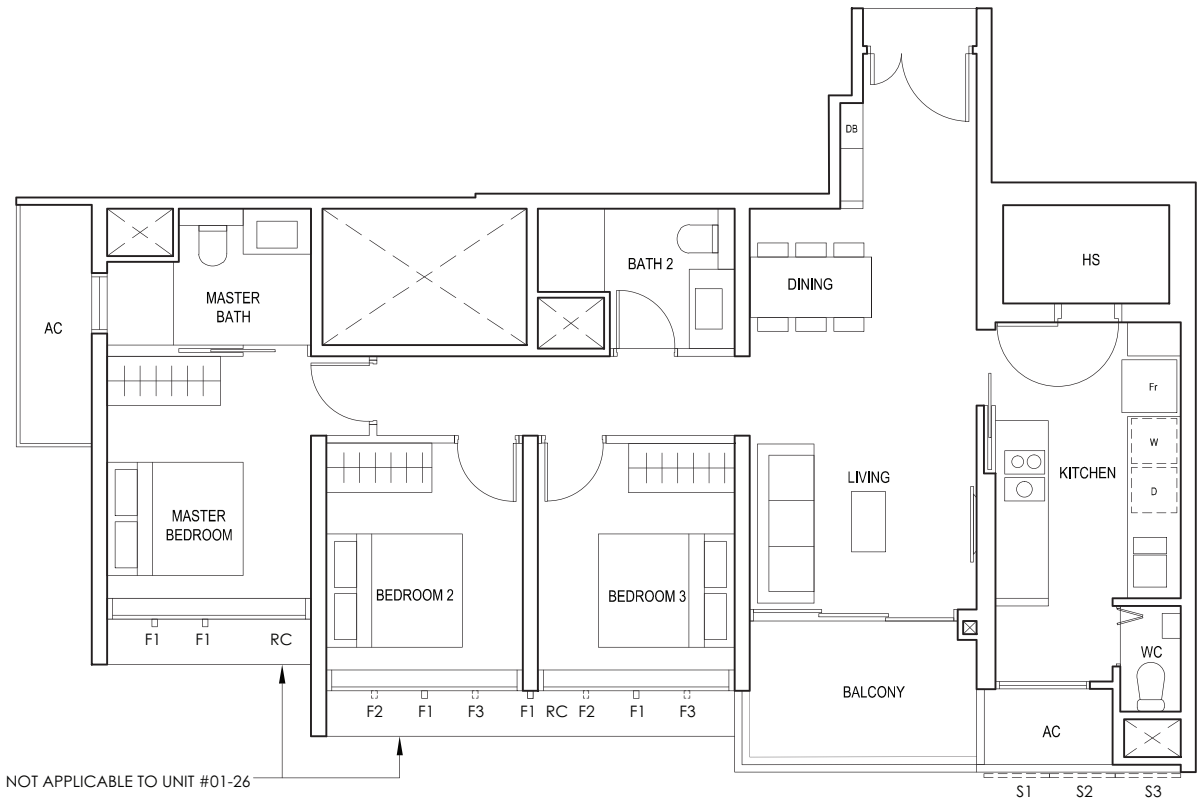
#03-34 to #17-34
99 sq m
1066sqft



FULL HEIGHT ALUMINIUM FIN LOCATED AT LEVELS:
F1 - #03 to #17
F2 - #05, #06, #09, #10, #13, #14, #17
F3 - #03, #04, #07, #08, #11, #12, #15 & #16

TYPE (3Y)e

#01-26 to #18-26
97 sq m
1044sqft

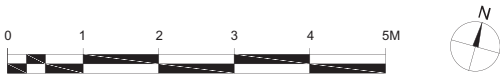
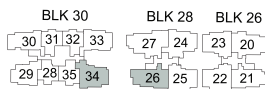


FULL HEIGHT ALUMINIUM PERFORATED SCREEN LOCATED AT LEVELS:
S1 - #01, #02, #03, #05, #06, #07, #09, #10, #11, #13, #14, #15, #17 & #18
S2 - #02, #04, #06, #08, #10, #12, #14, #16 & #18
S3 - #01, #03, #04, #05, #07, #08, #09, #11, #12, #13, #15, #16, #17

FULL HEIGHT ALUMINIUM FIN LOCATED AT LEVELS:
F1 - #01 to #18
F2 - #01, #02, #05, #06, #09, #10, #13, #14, #17 & #18
F3 - #03, #04, #07, #08, #11, #12, #15 & #16

LEGEND:
Fr - FRIDGE DB - DISTRIBUTION BOARD WC - WATER CLOSET W - WASHER D - DRYER
AC - AIRCON LEDGE RC - REINFORCED CONCRETE LEDGE HS - HOUSEHOLD SHELTER

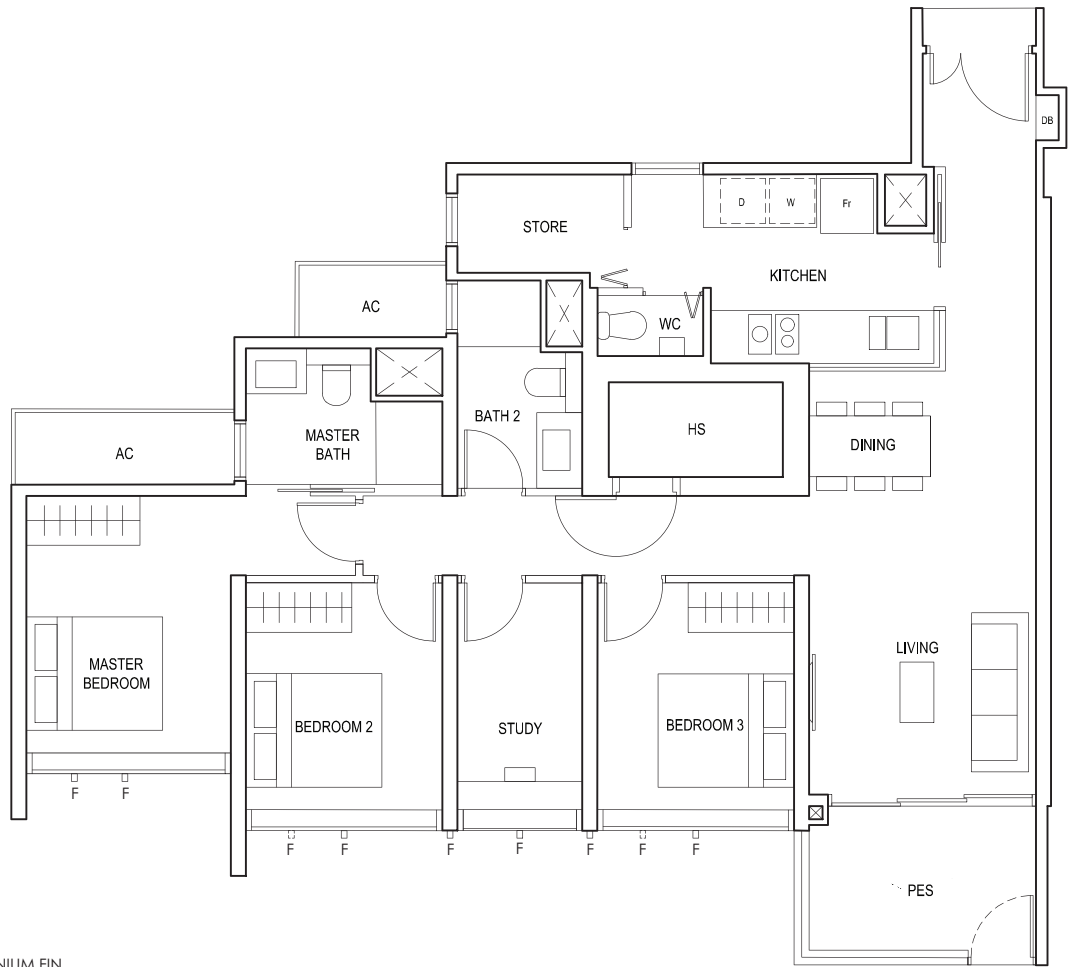
* AREA INCLUDES AIRCON (AC) LEDGE, BALCONY AND PRIVATE ENCLOSED SPACE (PES).
* THE BALCONY/PRIVATE ENCLOSED SPACE (PES) SHALL NOT BE ENCLOSED UNLESS WITH THE APPROVED BALCONY/PES SCREEN. FOR AN ILLUSTRATION OF THE APPROVED BALCONY/PES SCREEN, PLEASE REFER TO THE DIAGRAM ANNEXED HERETO AS "ANNEXURE 1".



3-BEDROOM
(with Study)

TYPE (3+1)a1

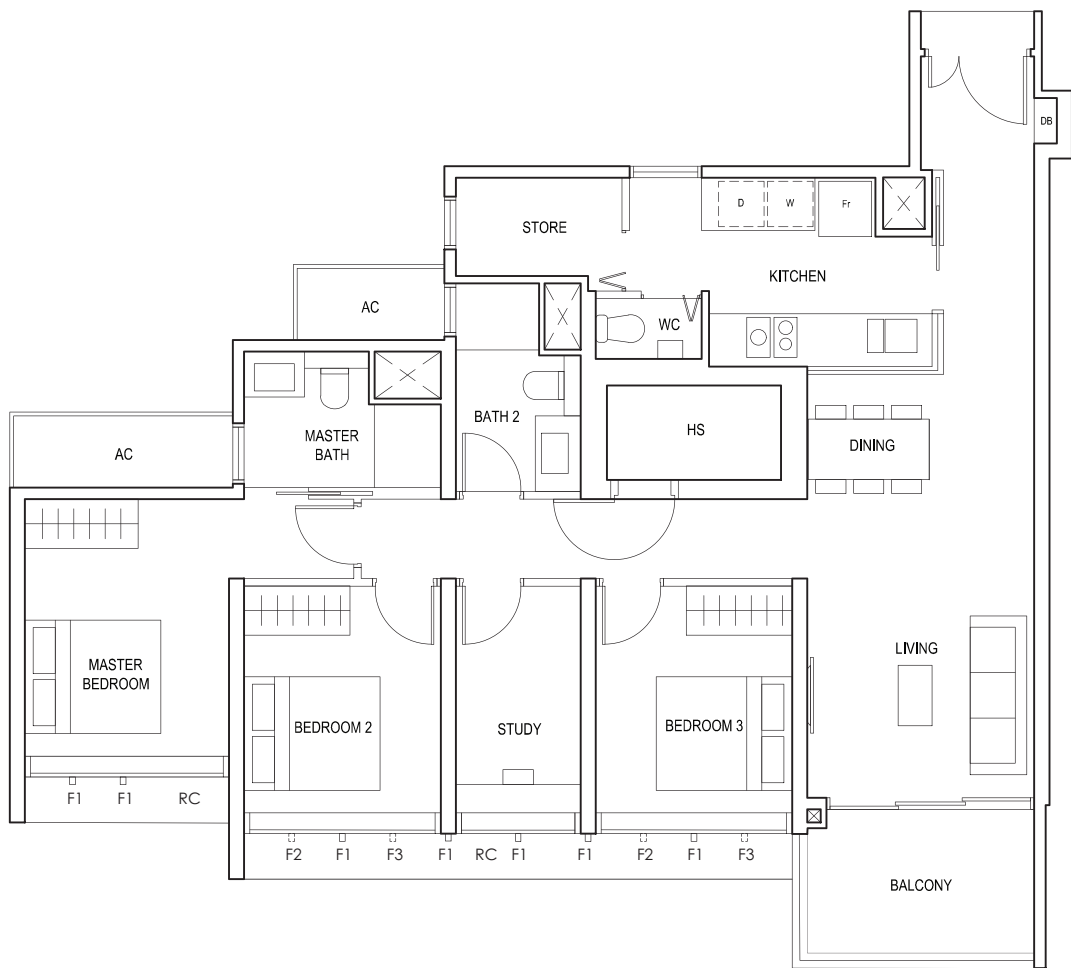
#01-07
110 sq m
1184sqft



F - FULL HEIGHT ALUMINIUM FIN

TYPE (3+1)a

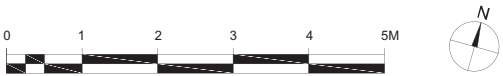
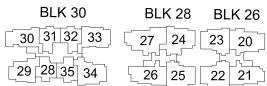
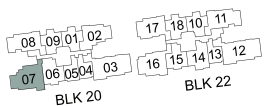
#02-07 to #18-07
110 sq m
1184sqft



FULL HEIGHT ALUMINIUM FIN LOCATED AT LEVELS:
F1 - #02 to #18
F2 - #02, #05, #06, #09, #10, #13, #14, #17 & #18
F3 - #03, #04, #07, #08, #11, #12, #15 & #16

LEGEND:
Fr - FRIDGE DB - DISTRIBUTION BOARD WC - WATER CLOSET W - WASHER D - DRYER
AC - AIRCON LEDGE PES - PRIVATE ENCLOSED SPACE RC - REINFORCED CONCRETE LEDGE HS - HOUSEHOLD SHELTER

* AREA INCLUDES AIRCON (AC) LEDGE, BALCONY AND PRIVATE ENCLOSED SPACE (PES).
* THE BALCONY/PRIVATE ENCLOSED SPACE (PES) SHALL NOT BE ENCLOSED UNLESS WITH THE APPROVED BALCONY/PES SCREEN. FOR AN ILLUSTRATION OF THE APPROVED BALCONY/PES SCREEN, PLEASE REFER TO THE DIAGRAM ANNEXED HERETO AS "ANNEXURE 1".

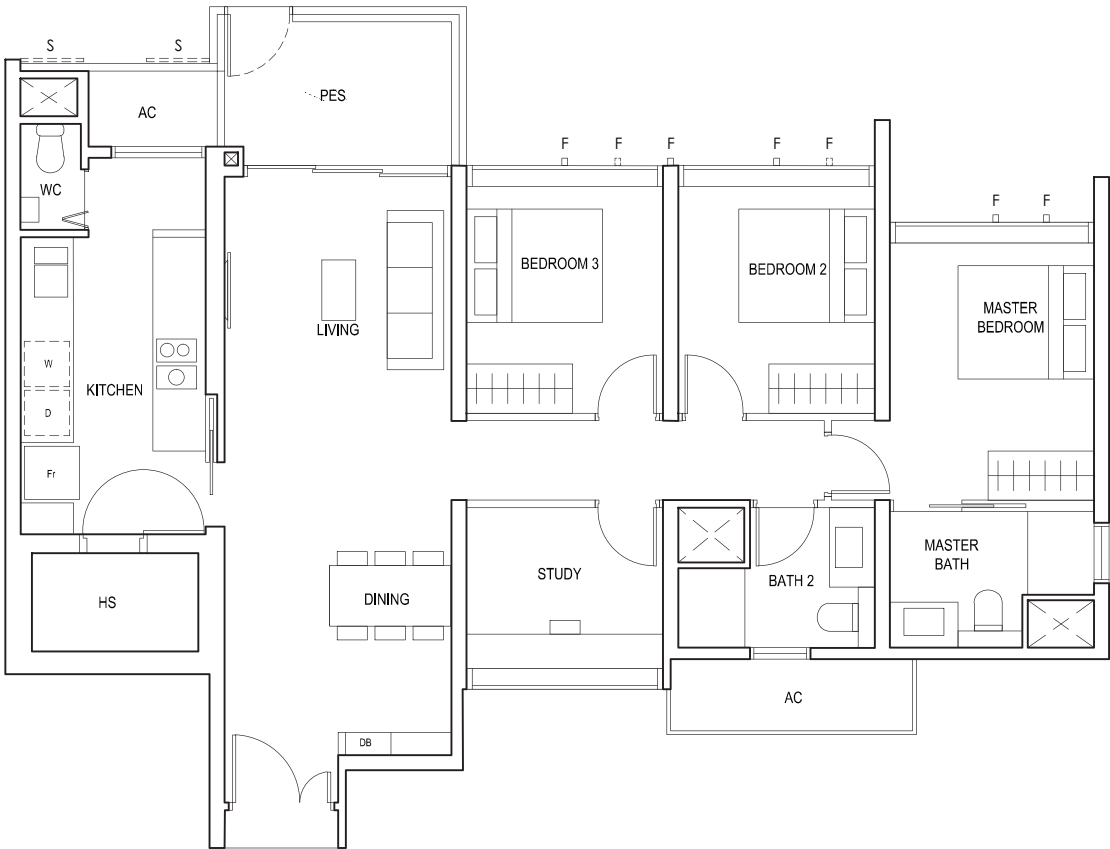


3-BEDROOM

(with Study)

TYPE (3+1)b1

#01-20
110 sq m
1184sqft



S - FULL HEIGHT ALUMINIUM PERFORATED SCREEN
F - FULL HEIGHT ALUMINIUM FIN

TYPE (3+1)b

#02-20 to #18-20
110 sq m
1184sqft

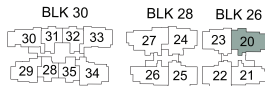


FULL HEIGHT ALUMINIUM PERFORATED SCREEN LOCATED AT LEVELS:
S1 - #02, #03, #05, #06, #07, #09, #10, #11, #13, #14, #15, #17 & #18
S2 - #02, #04, #06, #08, #10, #12, #14, #16 & #18
S3 - #03, #04, #05, #07, #08, #09, #11, #12, #13, #15, #16, #17

FULL HEIGHT ALUMINIUM FIN LOCATED AT LEVELS:
F1 - #02 to #18
F2 - #02, #05, #06, #09, #10, #13, #14, #17 & #18
F3 - #03, #04, #07, #08, #11, #12, #15 & #16

LEGEND:
Fr - FRIDGE DB - DISTRIBUTION BOARD WC - WATER CLOSET W - WASHER D - DRYER
AC - AIRCON LEDGE PES - PRIVATE ENCLOSED SPACE RC - REINFORCED CONCRETE LEDGE HS - HOUSEHOLD SHELTER

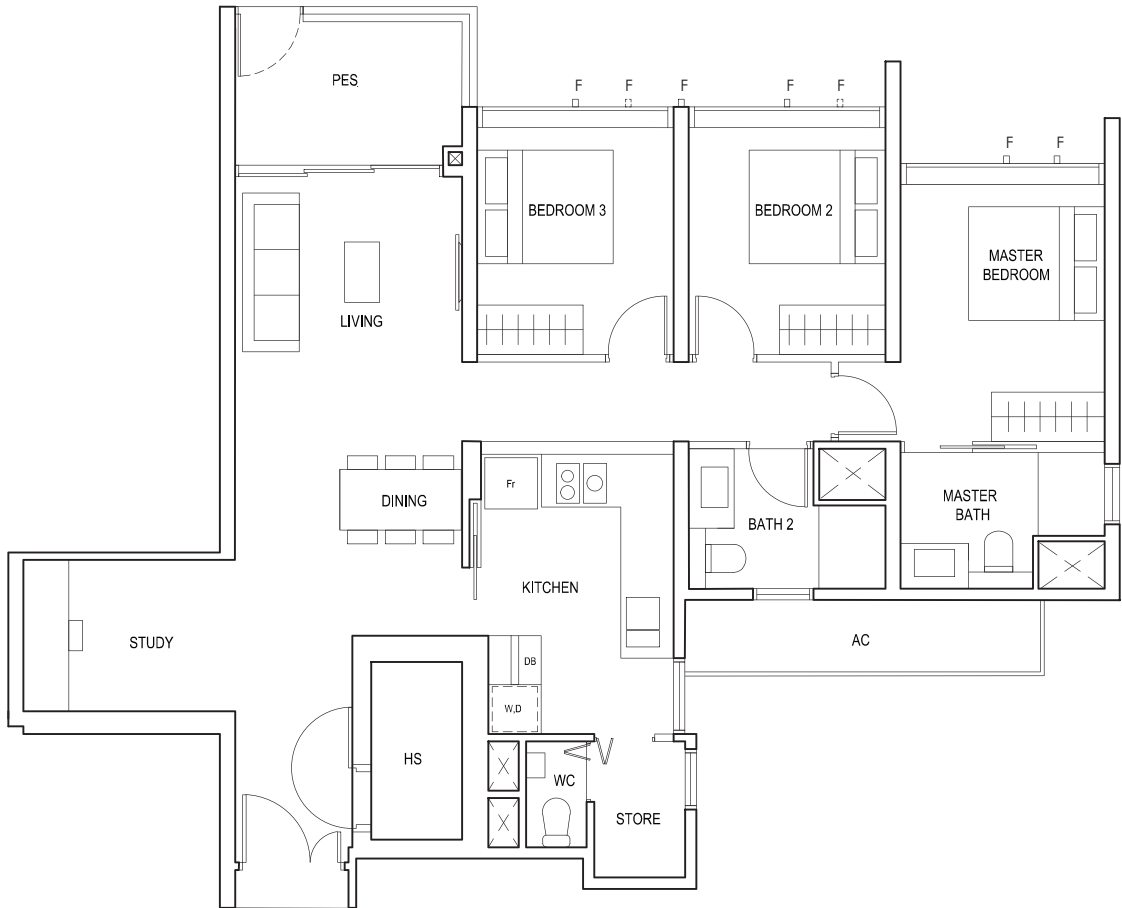
* AREA INCLUDES AIRCON (AC) LEDGE, BALCONY AND PRIVATE ENCLOSED SPACE (PES).
* THE BALCONY/PRIVATE ENCLOSED SPACE (PES) SHALL NOT BE ENCLOSED UNLESS WITH THE APPROVED BALCONY/PES SCREEN. FOR AN ILLUSTRATION OF THE APPROVED BALCONY/PES SCREEN, PLEASE REFER TO THE DIAGRAM ANNEXED HERETO AS "ANNEXURE 1".



3-BEDROOM
(with Study)

TYPE (3+1)c1

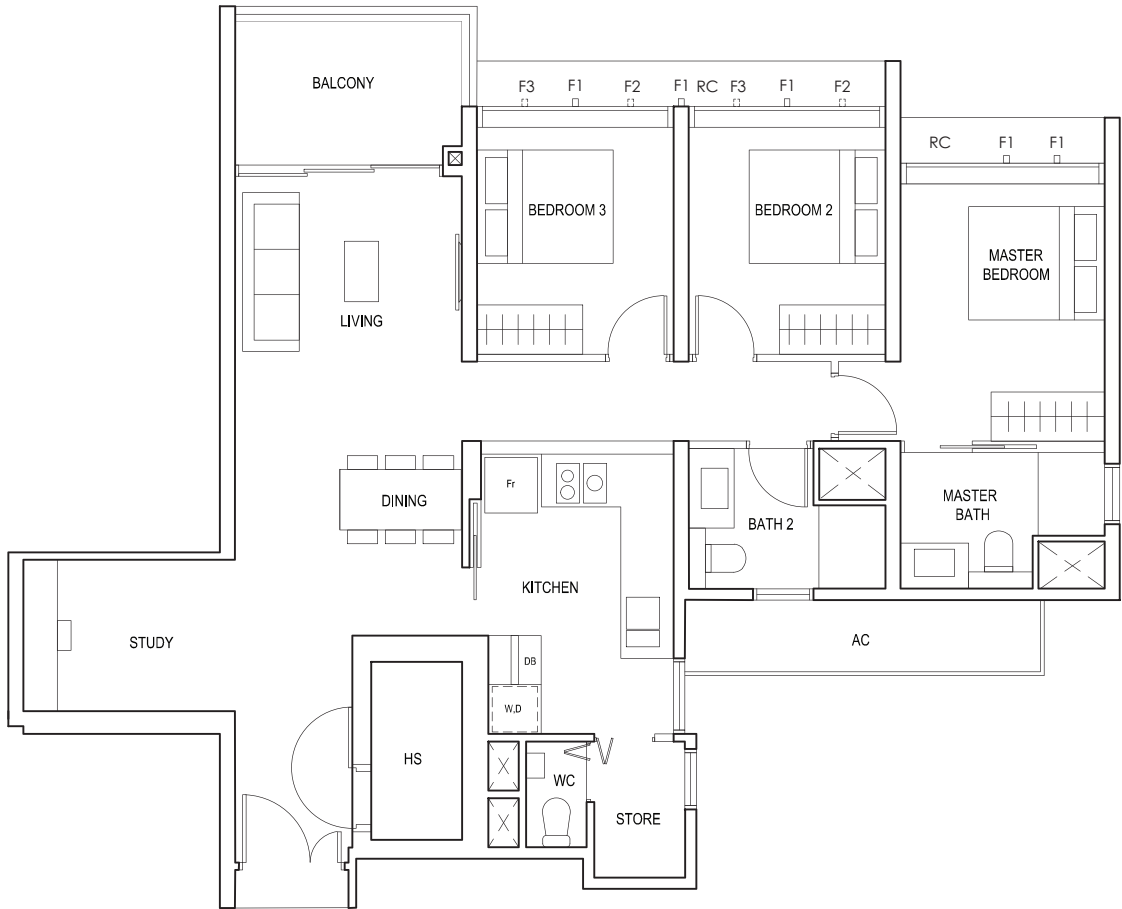
#01-24
109 sq m
1173sqft



F - FULL HEIGHT ALUMINIUM FIN

TYPE(3+1)c

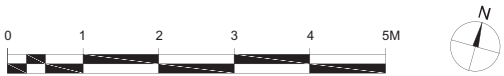
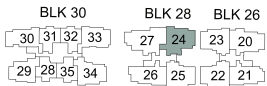
#02-24 to #18-24
109 sq m
1173sqft



FULL HEIGHT ALUMINIUM FIN LOCATED AT LEVELS:
F1 - #02 to #18
F2 - #02, #05, #06, #09, #10, #13, #14, #17 & #18
F3 - #03, #04, #07, #08, #11, #12, #15 & #16

LEGEND:
Fr - FRIDGE DB - DISTRIBUTION BOARD WC - WATER CLOSET W - WASHER D - DRYER
AC - AIRCON LEDGE PES - PRIVATE ENCLOSED SPACE RC - REINFORCED CONCRETE LEDGE HS - HOUSEHOLD SHELTER

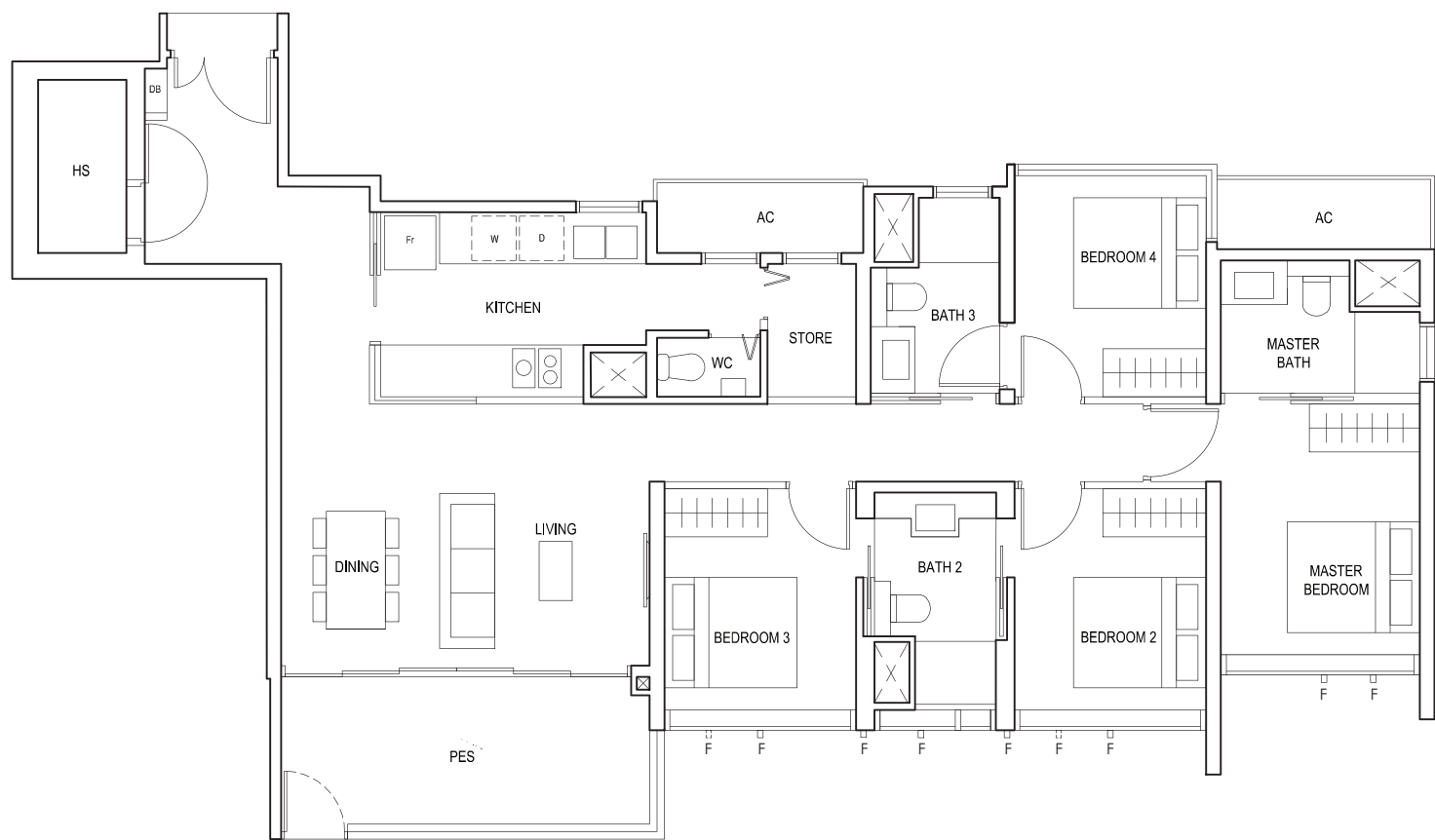
* AREA INCLUDES AIRCON (AC) LEDGE, BALCONY AND PRIVATE ENCLOSED SPACE (PES).
* THE BALCONY/PRIVATE ENCLOSED SPACE (PES) SHALL NOT BE ENCLOSED UNLESS WITH THE APPROVED BALCONY/PES SCREEN. FOR AN ILLUSTRATION OF THE APPROVED BALCONY/PES SCREEN, PLEASE REFER TO THE DIAGRAM ANNEXED HERETO AS "ANNEXURE 1".



4-BEDROOM

TYPE (4)a1

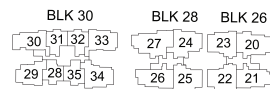
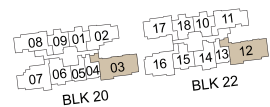
#01-03
#01-12
129 sq m
1388sqft



F - FULL HEIGHT ALUMINIUM FIN

LEGEND:
Fr - FRIDGE DB - DISTRIBUTION BOARD WC - WATER CLOSET W - WASHER D - DRYER
AC - AIRCON LEDGE PES - PRIVATE ENCLOSED SPACE HS - HOUSEHOLD SHELTER

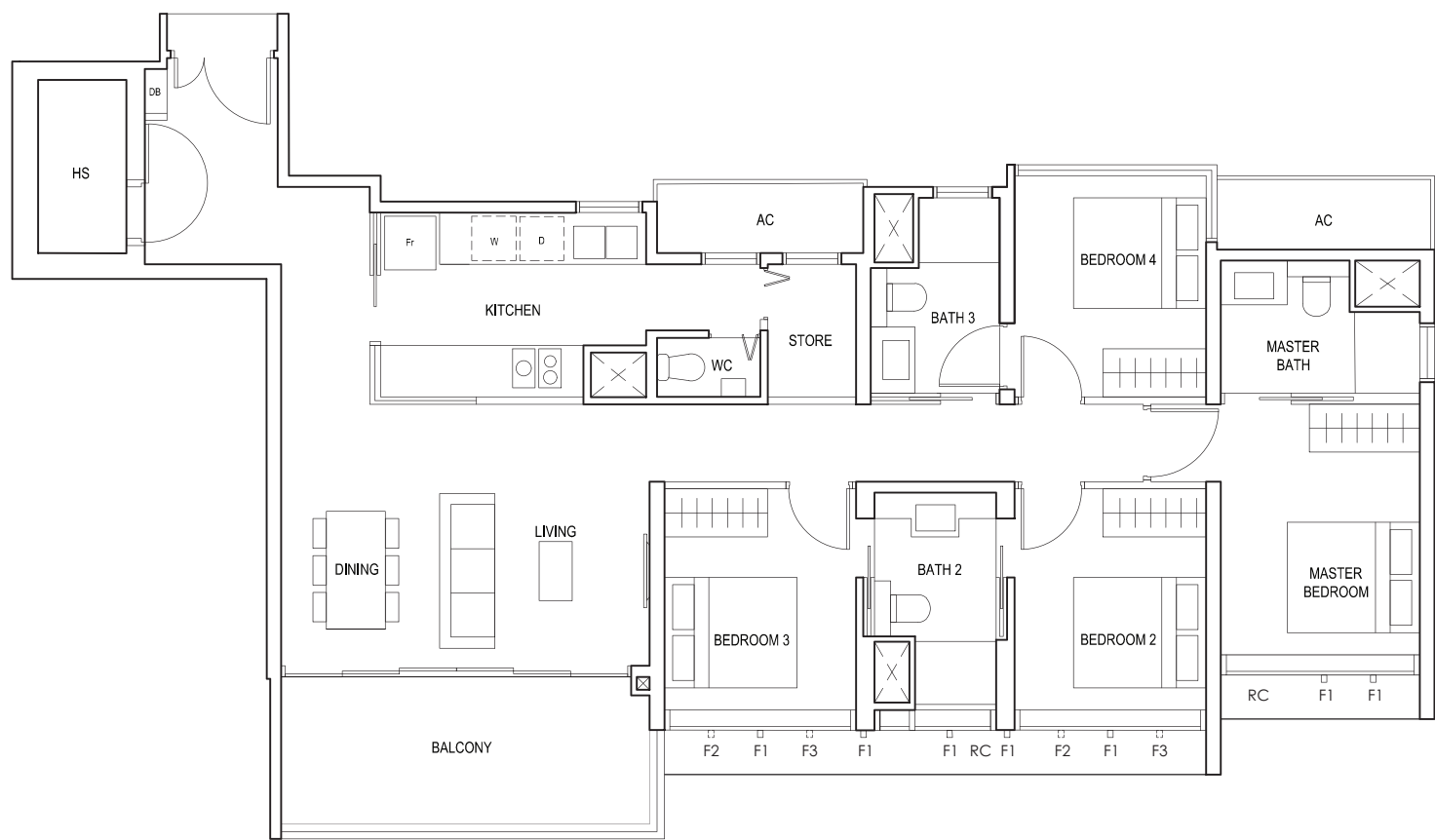
* AREA INCLUDES AIRCON (AC) LEDGE, BALCONY AND PRIVATE ENCLOSED SPACE (PES).
* THE BALCONY/PRIVATE ENCLOSED SPACE (PES) SHALL NOT BE ENCLOSED UNLESS WITH THE APPROVED BALCONY/PES SCREEN. FOR AN ILLUSTRATION OF THE APPROVED BALCONY/PES SCREEN, PLEASE REFER TO THE DIAGRAM ANNEXED HERETO AS "ANNEXURE 1".



4-BEDROOM

TYPE(4)a

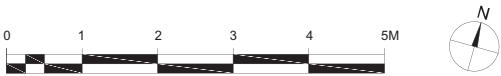
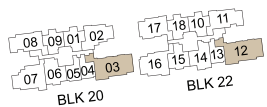
#02-03 to #18-03
#02-12 to #18-12
129 sq m
1388sqft



FULL HEIGHT ALUMINIUM FIN LOCATED AT LEVELS:
F1 - #02 to #18
F2 - #02, #05, #06, #09, #10, #13, #14, #17 & #18
F3 - #03, #04, #07, #08, #11, #12, #15 & #16

LEGEND:
Fr - FRIDGE DB - DISTRIBUTION BOARD WC - WATER CLOSET W - WASHER D - DRYER
AC - AIRCON LEDGE RC - REINFORCED CONCRETE LEDGE HS - HOUSEHOLD SHELTER

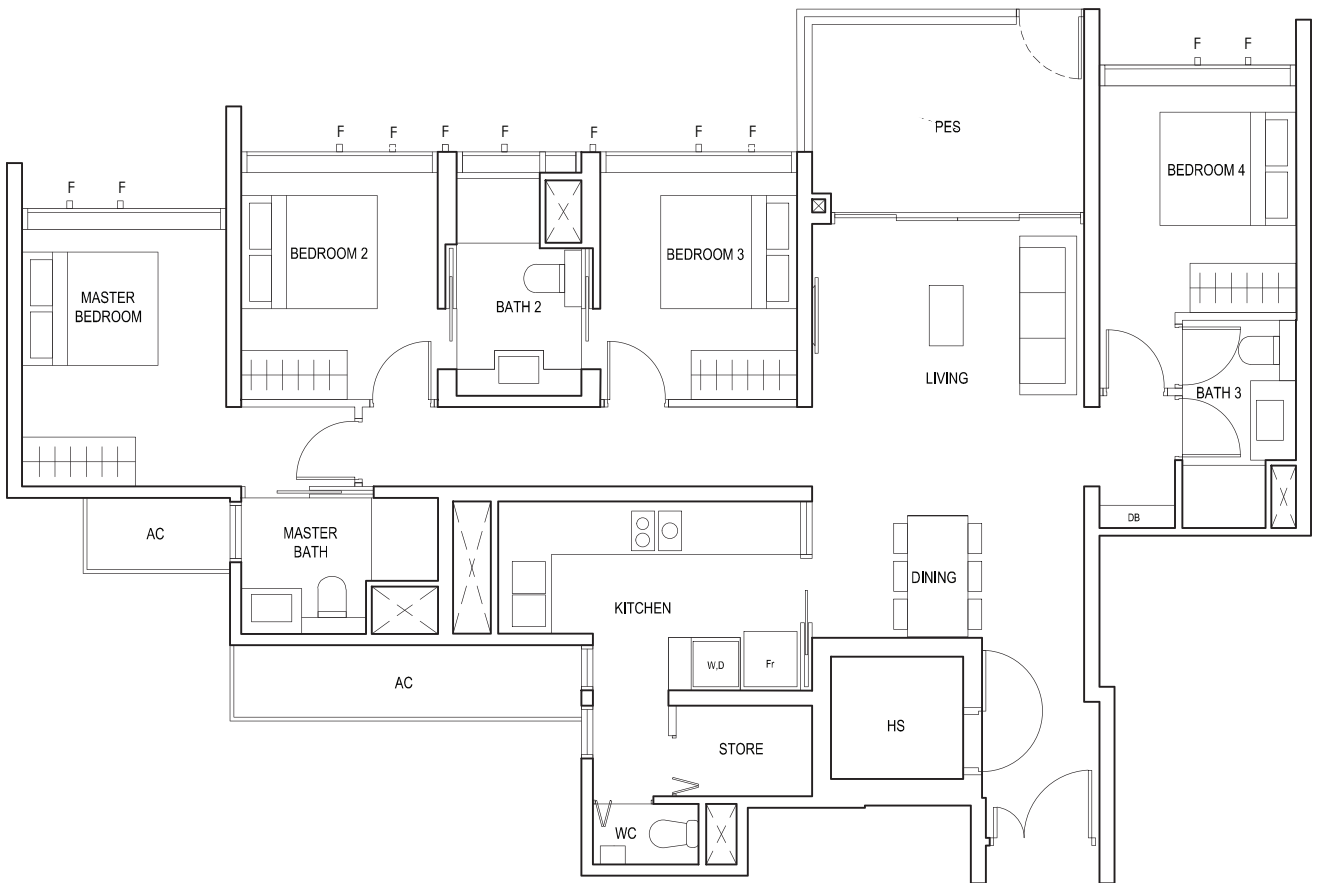
* AREA INCLUDES AIRCON (AC) LEDGE, BALCONY AND PRIVATE ENCLOSED SPACE (PES).
* THE BALCONY/PRIVATE ENCLOSED SPACE (PES) SHALL NOT BE ENCLOSED UNLESS WITH THE APPROVED BALCONY/PES SCREEN. FOR AN ILLUSTRATION OF THE APPROVED BALCONY/PES SCREEN, PLEASE REFER TO THE DIAGRAM ANNEXED HERETO AS "ANNEXURE 1".



4-BEDROOM

TYPE(4)b1

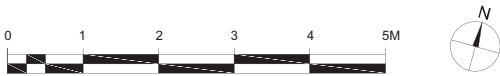
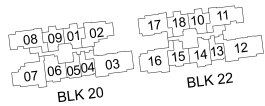
#01-27
130 sq m
1399sqft



F - FULL HEIGHT ALUMINIUM FIN

LEGEND:
Fr - FRIDGE DB - DISTRIBUTION BOARD WC - WATER CLOSET W - WASHER D - DRYER
AC - AIRCON LEDGE PES - PRIVATE ENCLOSED SPACE HS - HOUSEHOLD SHELTER

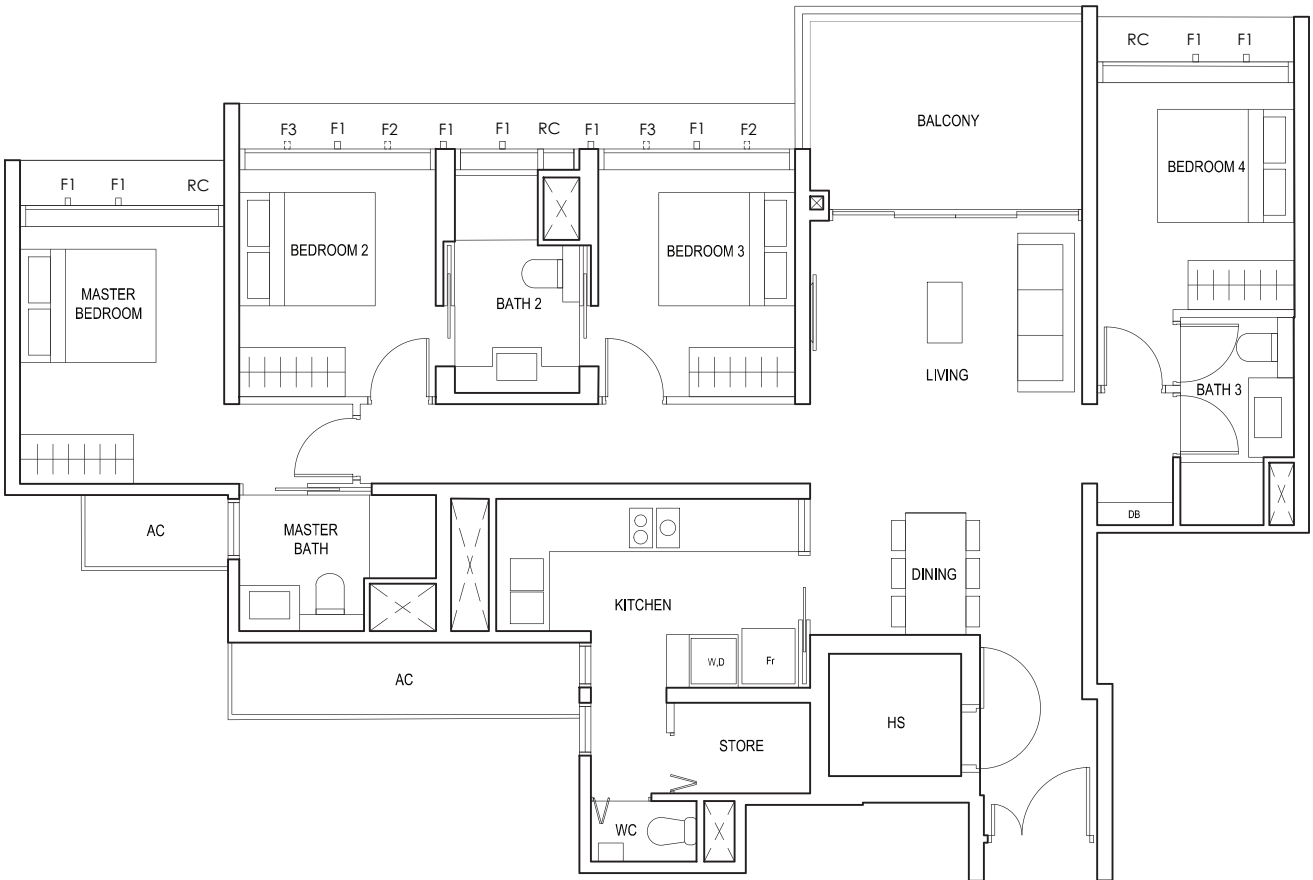
* AREA INCLUDES AIRCON (AC) LEDGE, BALCONY AND PRIVATE ENCLOSED SPACE (PES).
* THE BALCONY/PRIVATE ENCLOSED SPACE (PES) SHALL NOT BE ENCLOSED UNLESS WITH THE APPROVED BALCONY/PES SCREEN. FOR AN ILLUSTRATION OF THE APPROVED BALCONY/PES SCREEN, PLEASE REFER TO THE DIAGRAM ANNEXED HERETO AS "ANNEXURE 1".



4-BEDROOM

TYPE(4)b

#02-27 to #18-27
130 sq m
1399sqft



FULL HEIGHT ALUMINIUM FIN LOCATED AT LEVELS:
F1 - #02 to #18
F2 - #02, #05, #06, #09, #10, #13, #14, #17 & #18
F3 - #03, #04, #07, #08, #11, #12, #15 & #16

LEGEND:
Fr - FRIDGE DB - DISTRIBUTION BOARD WC - WATER CLOSET W - WASHER D - DRYER
AC - AIRCON LEDGE RC - REINFORCED CONCRETE LEDGE HS - HOUSEHOLD SHELTER

* AREA INCLUDES AIRCON (AC) LEDGE, BALCONY AND PRIVATE ENCLOSED SPACE (PES).
* THE BALCONY/PRIVATE ENCLOSED SPACE (PES) SHALL NOT BE ENCLOSED UNLESS WITH THE APPROVED BALCONY/PES SCREEN. FOR AN ILLUSTRATION OF THE APPROVED BALCONY/PES SCREEN, PLEASE REFER TO THE DIAGRAM ANNEXED HERETO AS "ANNEXURE 1".

